

# What's new in Sage X3 2022 R1

*Raheel Khan*

*30/03/2022*



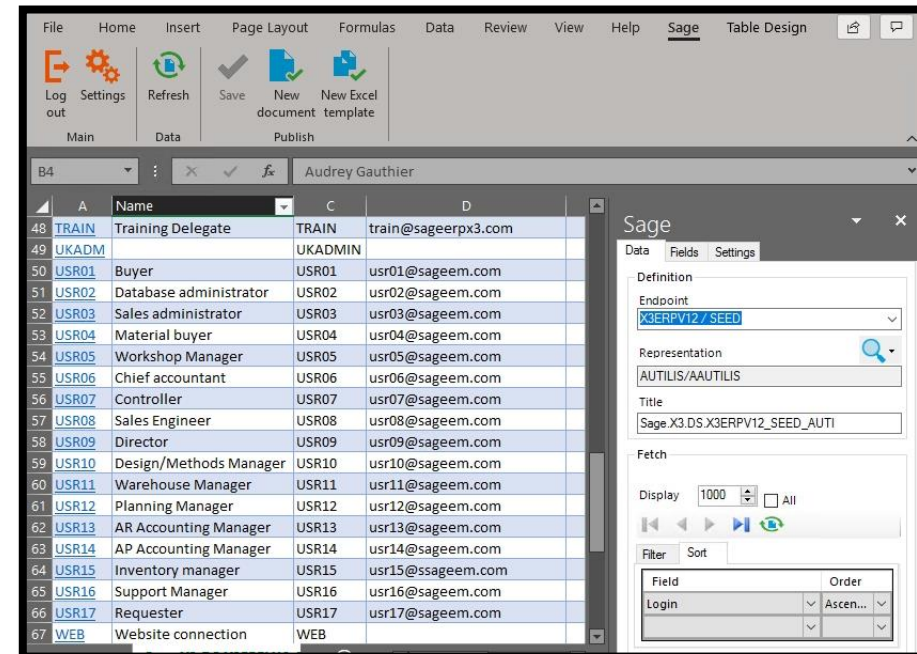
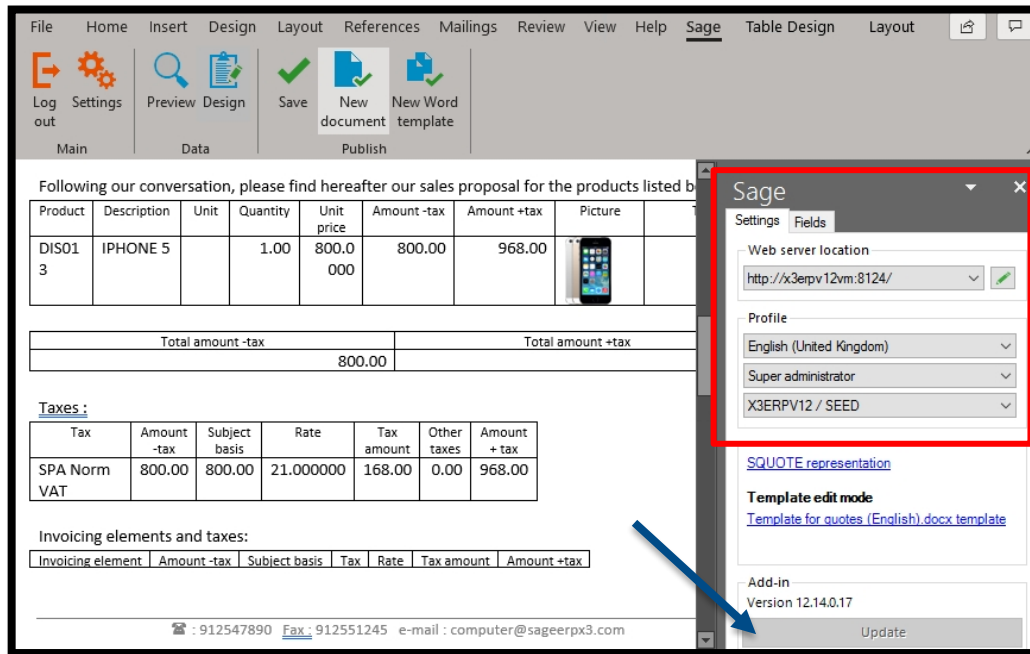
# Introduction

- **The New Office Plugins**
  - New release of the Microsoft® Office plugin delivered with Sage X3 for Word, Excel & Outlook
- **Customisation Audit Tool**
  - Customisation audit function (GESASPE)
- **Clustered Index's**
  - Now delivered with Sage X3
- **Multiple Print Server Instances**
  - Multiple print server instances with different parameters on the same server
- **Mongo DB 4.4 Supported**
  - Documentation that will help you to complete a successful migration

# New Excel & Word Add-in



- Now uses Microsoft Edge libraries dependence on Internet Explorer 11 libraries is removed (depreciation of IE planned for June 2022)
- Improved user interface that uses the task pane in office
- As before locally installed clients are supported (365 browser version not supported)
- One of the new features we have is the update button becomes available in the settings tab if a new add-in becomes available

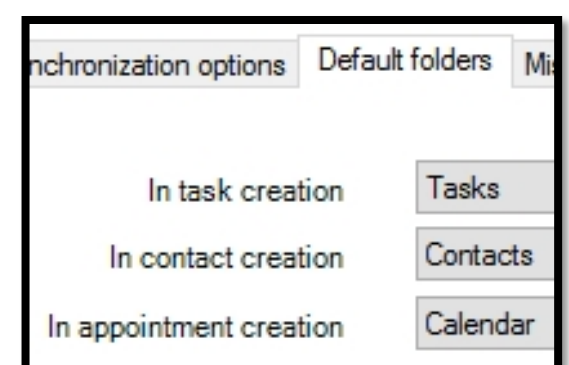
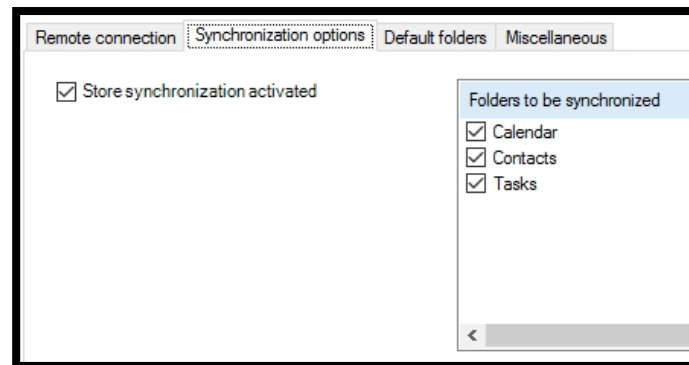
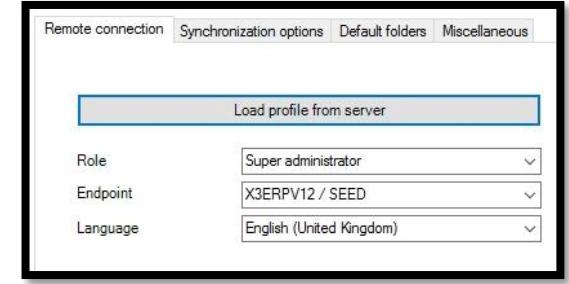
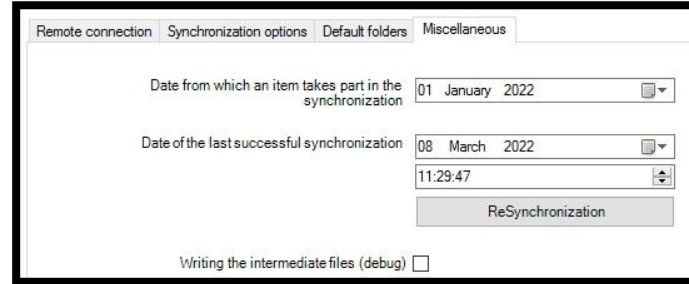
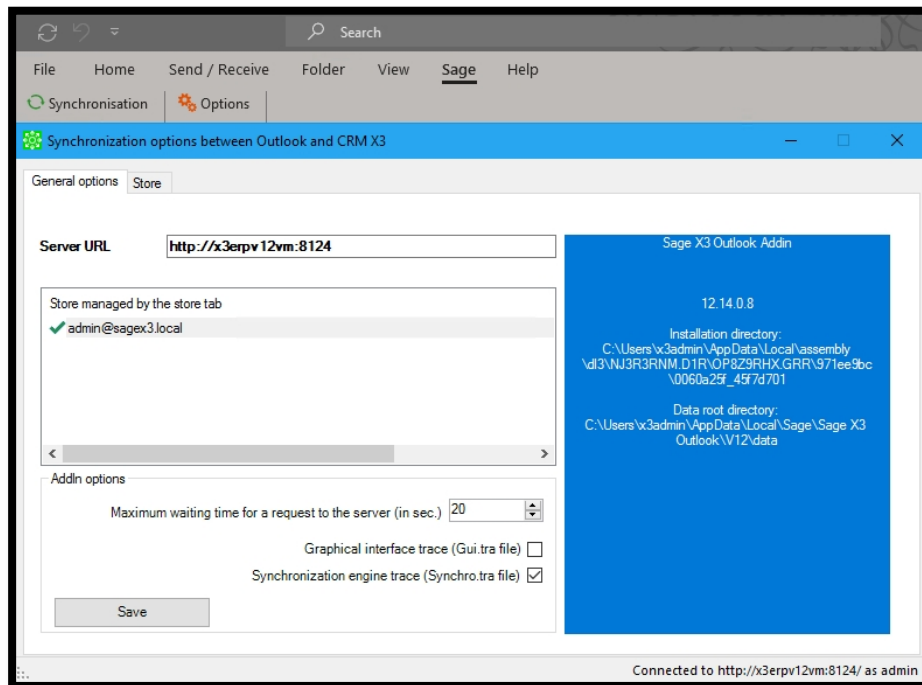


Detailed help can be found here <https://online-help.sageerpx3.com/erp/12/wp-static-content/public/Office%20plugin/Default.htm>

# New Outlook Add-in

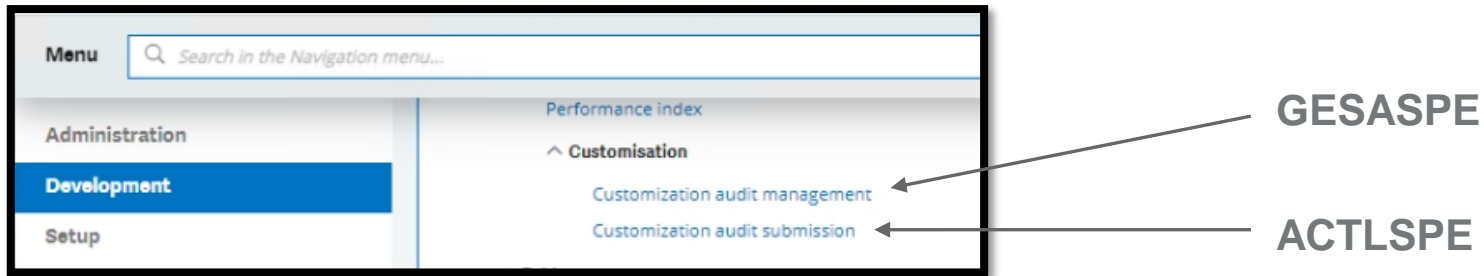


- Main enhancement is a security change to bring the Outlook add-in inline with the other add-ins available. All connections are now directed through the Syracuse webserver layer.
- The feature set of the plugin and interface remains unchanged, appointments, contact, task sync are still available in the familiar user interface
- Now uses Microsoft Edge libraries dependence on Internet Explorer 11 libraries is removed (depreciation planned for June 2022)



# Customisation Audit Tool

The new customisation audit tool checks all custom developments and modifications in a folder by comparing it with the reference X3 folder. It lists any item that constitute a risk or a violation of development rules and highlights the risk level and the detected anomaly. You can then drill into the details of each highlighted issue and fix the problem if necessary.



## Some of the rules that should be followed when customising

- Standard data types should not be changed
- Standard fields should not be protected with activity codes
- You should group your specific fields into specific screens or tabs that you will add to standard windows, rather than inserting them into standard screens.
- You should not develop inside supervisor entities (objects, screens, tables, and so on)



# Customisation Audit Tool Results



Function **Development**, **Utilities**, **Verifications**, **Customisation**, **Customisation audit management (GESASPE)** displays the results. Customisation audit submission function (**ACTLSPE**) submits the audit task. The task can also be submitted using the batch server, this is recommended as its likely to take a long period of time to complete the audit

	Object T...	Identifier	Type
29	ACL	BPCUSTOMER	Errors
30	ACL	BPSUPPLIER	Errors
31	ACL	BPSUPPLIER	Errors
32	ACL	GCOA	Errors
28	AMK	AP01	Fatal errors
1	AML	125	Fatal errors
2	AML	588	Fatal errors
3	AML	603	Fatal errors
4	AML	638	Fatal errors
5	AML	866	Fatal errors
6	AML	1003	Errors
7	AML	2006	Fatal errors
8	AML	2008	Fatal errors
9	AML	2024	Fatal errors
10	AML	2032	Fatal errors

**Sequence**  
**Script version**  
**Folder**

Unique number that identifies the audit run  
Version of the audit script executed  
Folder the audit was executed on

The audit logic identifies three categories of anomalies for investigation, Risks, Errors and Fatal Errors

## Risks

Elements that can cause additional work or a possible loss of data or metadata when updating or upgrading. There is also the risk of conflicting with standard elements when applying an update.

## Errors

Development elements that do not comply with Sage X3 development guidelines and can cause the same issues as risks.

## Fatal Errors

Development elements that do not comply with Sage X3 development guidelines and can cause issues and malfunctions when operating or updating Sage X3

More detailed information available on this link <https://online-help.sageerpx3.com/erp/12/wp-static-content/public/Customization%20audit/Default.htm>

# Clustered Index Pre Settings



From version 2021 R2 (V12 P26) Sage has started to ship predefined clustered indexes with Sage X3.

Clustered index's can help to improve the performance of the system by:

**Reducing read operations** - Instead of reading the index and then the associated data, the SQL Server engine will read the index and data with one read operation.

**Reducing sort operations** - Sage X3 sorts all queries using the default index by order. Clustered indexes are sorted already, so using them no longer requires using tempdb to sort data

Previously the advice was that customers need to investigate the use of the system and implement their own clustered Indexes, however it was found that in some instances Sage can determine efficient clustered indexes for dictionary and supervisor tables because the types of queries and updates are known and common across X3 implementations for example

- Patching and upgrading (which updates dictionary tables)
- Document number assignments (where counter tables are updated concurrently)
- Parameter values access

All > Development > Data and parameters > Tables

Table dictionary

General Columns Index Audit

We can see a default clustered index added to the APATCH table

	Index code	Index descriptor	Dupli...	Default clustered index	Speci...	Activity
1	APT0	NUM	No	Yes	No	

## Delivered clustered indexes

Clustered indexes delivered in 2021 R2/V12.0.26 ▾

Clustered indexes delivered in 2021 R3/V12.0.27 ▾

Clustered indexes delivered in 2021 R4/V12.0.28 ▾

With each version there will be new clustered index's included , you can find these and more information at this link <https://online-help.sageerpx3.com/erp/12/wp-static-content/public/Clustered%20index/Default.htm>



# Multiple Print Server Instances



From the 2021 R3 release we can now have multiple print server instances (profiles) on the same windows server. The main benefit of this feature is to eliminate the need of a specific print server machine or installation for each localisation thus reducing the overall cost of the X3 solution.

- Minimum requirement of Print server 2.24 with Console 2.51.
- Specified Port needs to be available for each profile
- Print server 2.24 and Console 2.51 require .NET framework 4.7.2.

Different servers available each can have different localisation settings time zone / date format

The screenshot displays the Sage X3 Print Server console interface. On the left, a tree view shows the hierarchy: X3V12PRTSVR on x3erpv12vm [ID : X3V12PRTSVR] -> DEFAULT -> X3 ERP V12 on x3erpv12vm - [ID:X3ERP12] -> SEED -> X3. Below this, the 'Configuration for 'DEFAULT' profile' is shown, with parameters: Operating system (windows), PrintServer service port (50002), User ID / PrintServer service (x3run), and User password / PrintServer service. To the right, two other configuration windows are shown: 'Configuration for 'PRINT-DE' profile' and 'Configuration for 'PRINT-FR' profile'. Both show similar parameters but with different service ports (50004 and 50003 respectively) and user IDs (X3v12de and X3v12fr). A 'List of servers' window is also shown, listing the three profiles with their respective names, servers, ports, and profiles.

Name	Server	Port	Profile
X3V12PRTSVR	x3erpv12vm	50002	DEFAULT
X3V12PRTSVR	x3erpv12vm	50003	PRINT-FR
X3V12PRTSVR	x3erpv12vm	50004	PRINT-DE

Setup information can be found at this link <https://online-help.sageerpx3.com/erp/12/wp-static-content/public/Multiple%20print%20servers/Default.htm>

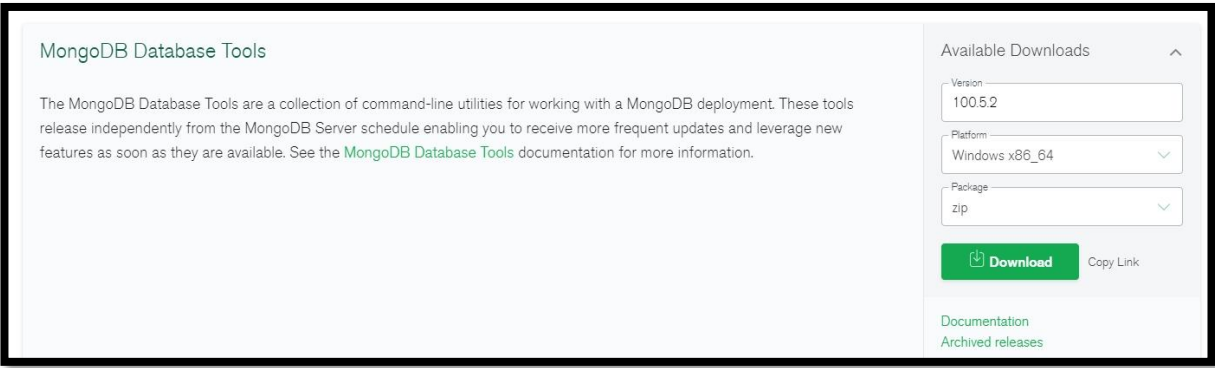
Blog post on feature <https://www.sagecity.com/gb/sage-x3-uk/b/sage-x3-uk-support-insights/posts/new-feature-in-2021-r3-multiple-print-server-instances>









# MongoDB 4.4 Supported



With the release of Sage X3 2022 R1 the platform is now compatible with MongoDB 4.4 which has been certified with Syracuse12.14.

Important note - MongoDB 4.4 does not currently ship with the Mongo DB tools that we found in previous releases, these tools can be downloaded separately from <https://www.mongodb.com/try/download/database-tools>. Sage are considering packaging these tools in future releases that Sage provide.



Name	Type
 mongotop.exe	Application
 mongostat.exe	Application
 mongorestore.exe	Application
 mongoimport.exe	Application
 mongofiles.exe	Application
 mongoexport.exe	Application
 mongodump.exe	Application
 bsondump.exe	Application

## Useful Links

How to upgrade to MongoDB 4.4

[https://online-help.sageerpx3.com/erp/12/public/how-to\\_how-to-upgrade-to-MongoDB-4.4.html](https://online-help.sageerpx3.com/erp/12/public/how-to_how-to-upgrade-to-MongoDB-4.4.html)

Additional notes when upgrading to MongoDB 4.x

<https://support.na.sage.com/selfservice/viewdocument.do?noCount=true&externalId=107620>

# Where is the new features info ?



## Release Notes

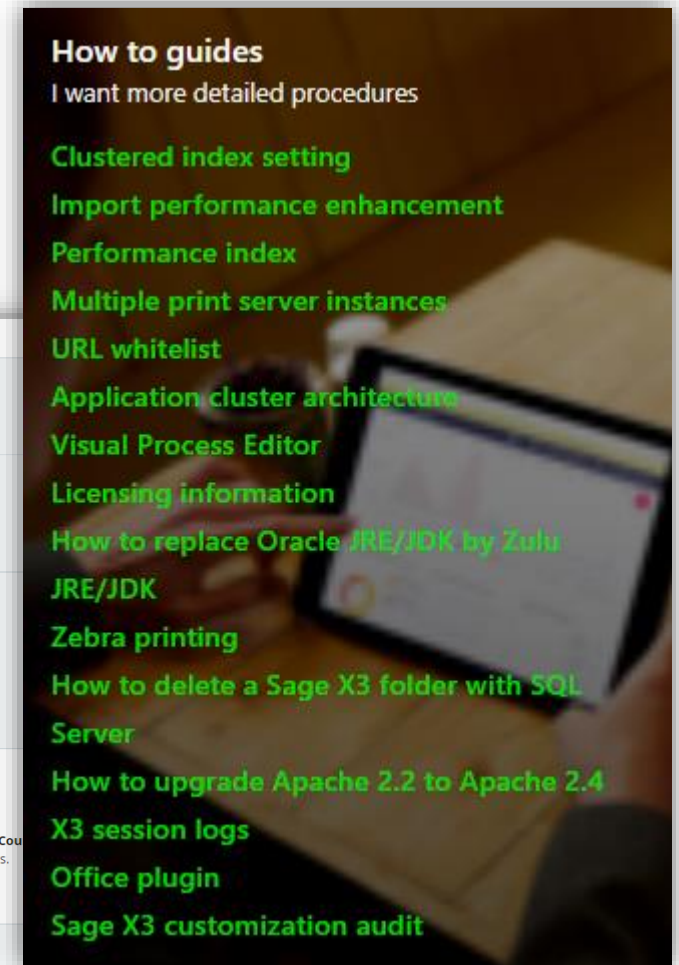
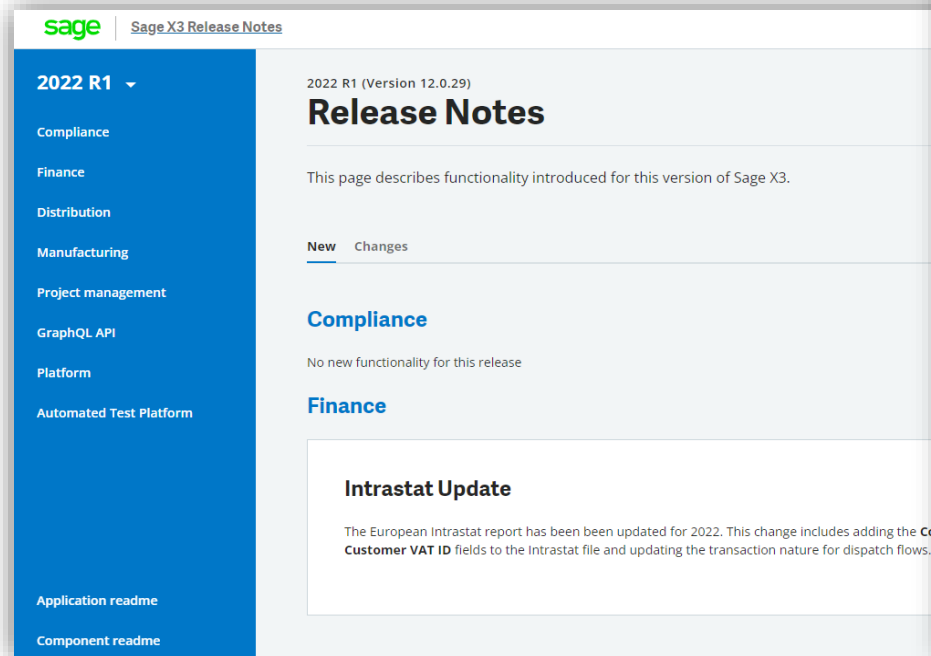
[https://online-help.sageerpx3.com/erp/12/wp-static-content/news/en\\_US/ReleaseNote/RELNOTE\\_V12.0.29.htm](https://online-help.sageerpx3.com/erp/12/wp-static-content/news/en_US/ReleaseNote/RELNOTE_V12.0.29.htm)

## Technical help

<https://online-help.sageerpx3.com/erp/12/public/index.html>

## Sage City

<https://www.sagecity.com/gb/sage-x3-uk/>



# Thank you

