

E-book

Make the most out of the new premium version of Sage HRMS!

Get access to all the new enhancements and features which are exclusive to the premium version of Sage HRMS.

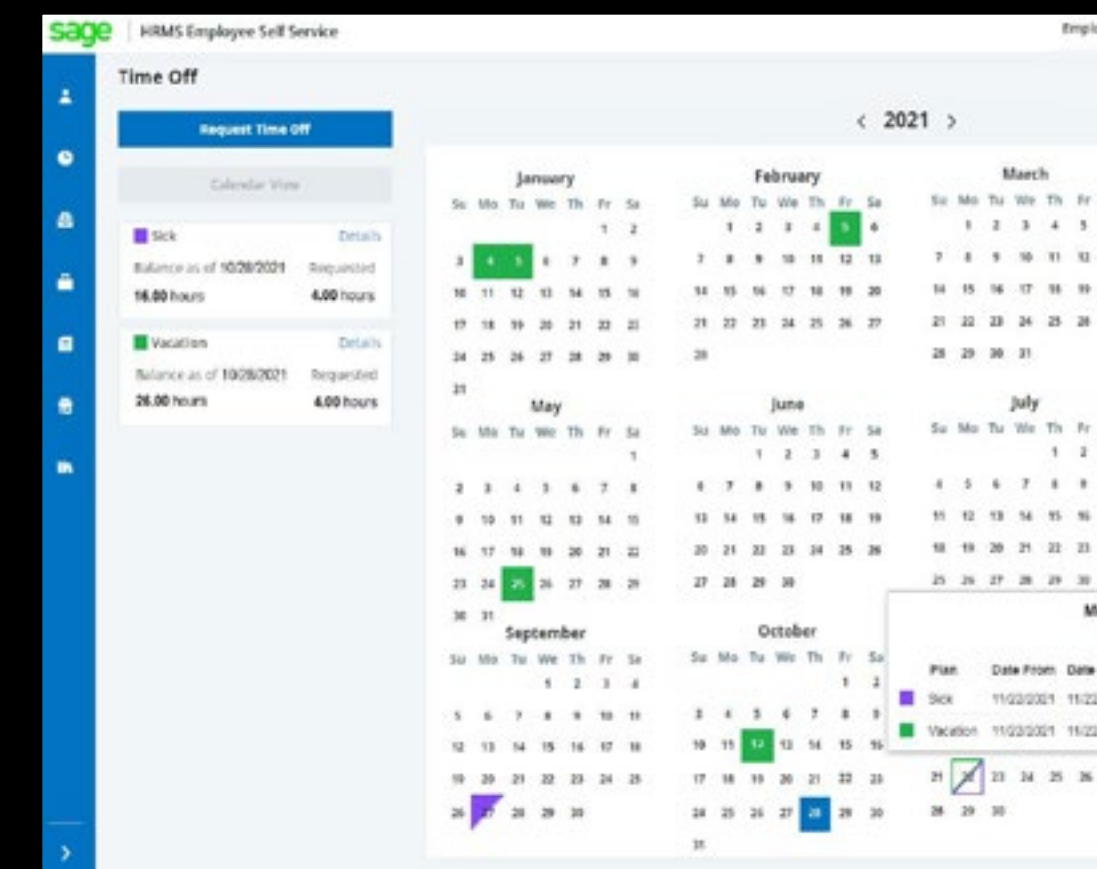
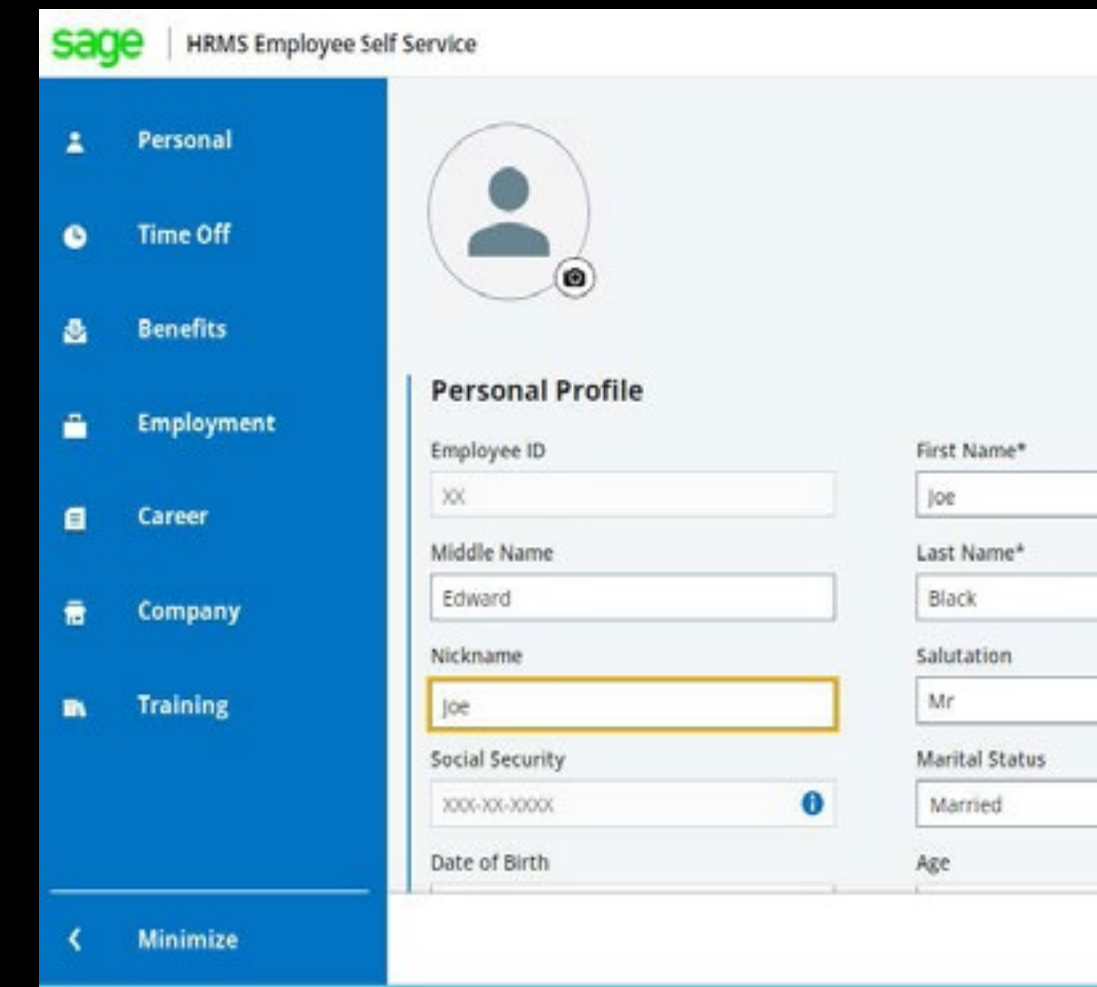
Sage



What is the premium version of Sage HRMS?

Sage HRMS offers many features and enhancements that improve your user experience, offers richer integration to accounts & payroll, meets wider compliance needs and improved technical underpinnings.

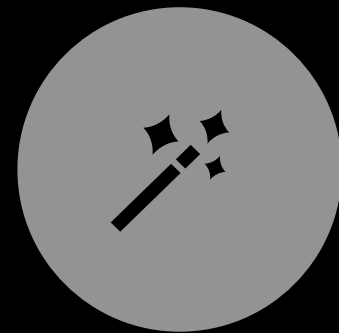
The premium version of Sage HRMS is a product that Sage is focusing its development upon, making investments in new functionality, enhancements, and technologies to improve its longevity and scalability.



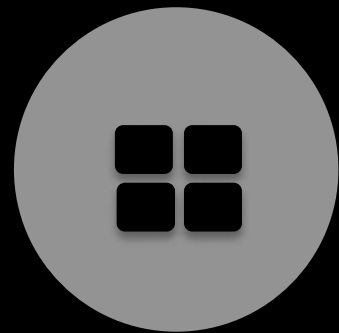
Some enhancements of the premium version of Sage HRMS



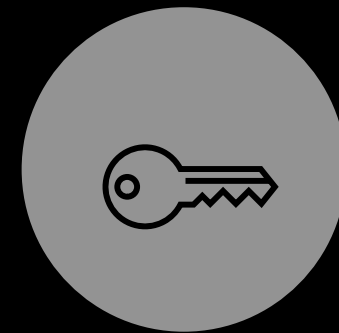
Better Navigation



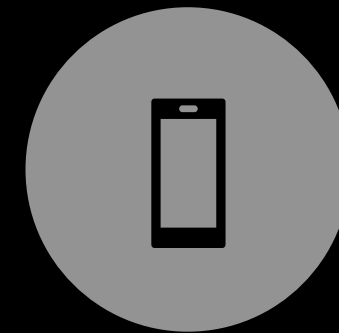
ESS Modernization



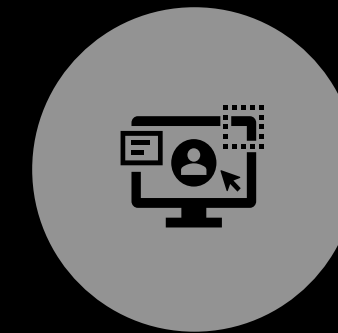
Support Windows 11



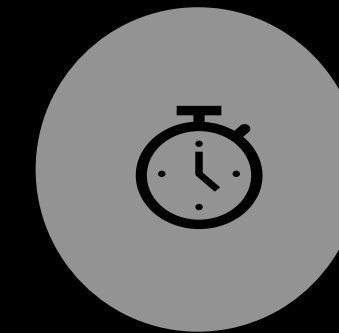
Multi-factor Authentication



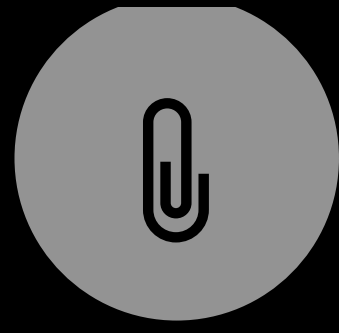
ESS Mobile access



User Experience



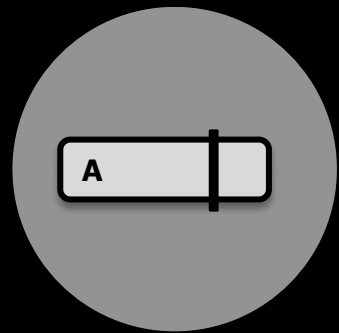
Passive Enrollment



Attachments



New Secure Queries



100+ new fields in ESS



Time Off improved



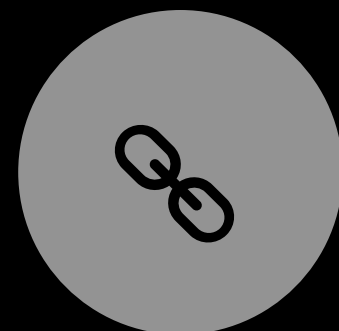
Employee Contribution



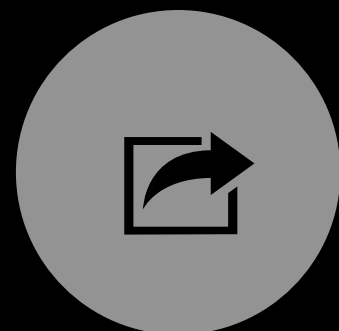
Error Validation



Own Security Questions



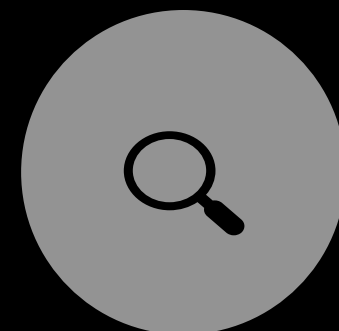
Links to favorites & most visited sites



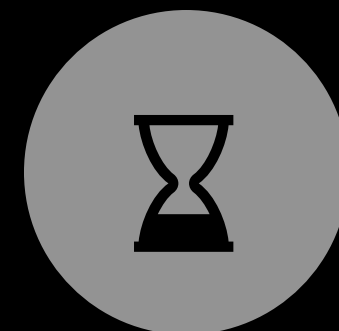
Send Benefits letters to ESS



Taxes for employees by default



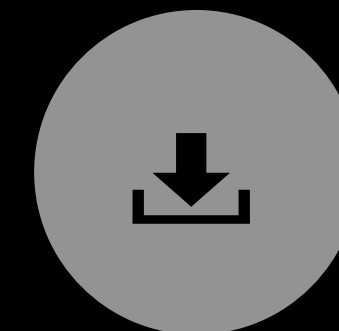
Diagnostic information



Attendance Summary performance improved



Preferred name field

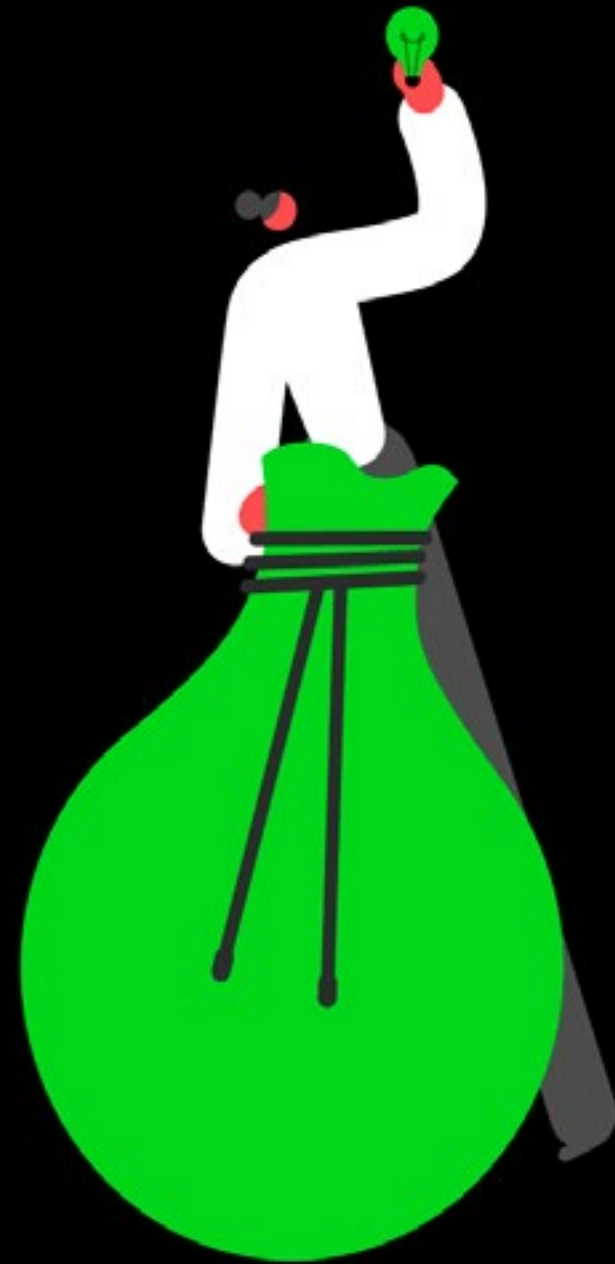


Employee find data extraction

Many more are coming soon!!

Sage HRMS

Product Innovation



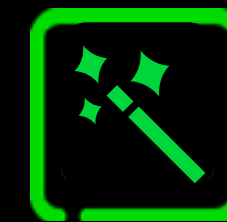
Our three-year vision is to provide a modernized & user-friendly product.

These are our 5 Core principles for Product Innovation:



Modernization, Simplification, and Ease of Use

Provide a modernized user interface and experience that increase users' efficiency and productivity.



Product Capabilities

Add extra value and address ease of use by implementing a number of enhancement requests in each release.



Web Application

Provide an HR web experience and improved performance by upgrading background technology.



Enhance Payroll, ISV Integrations, and APIs

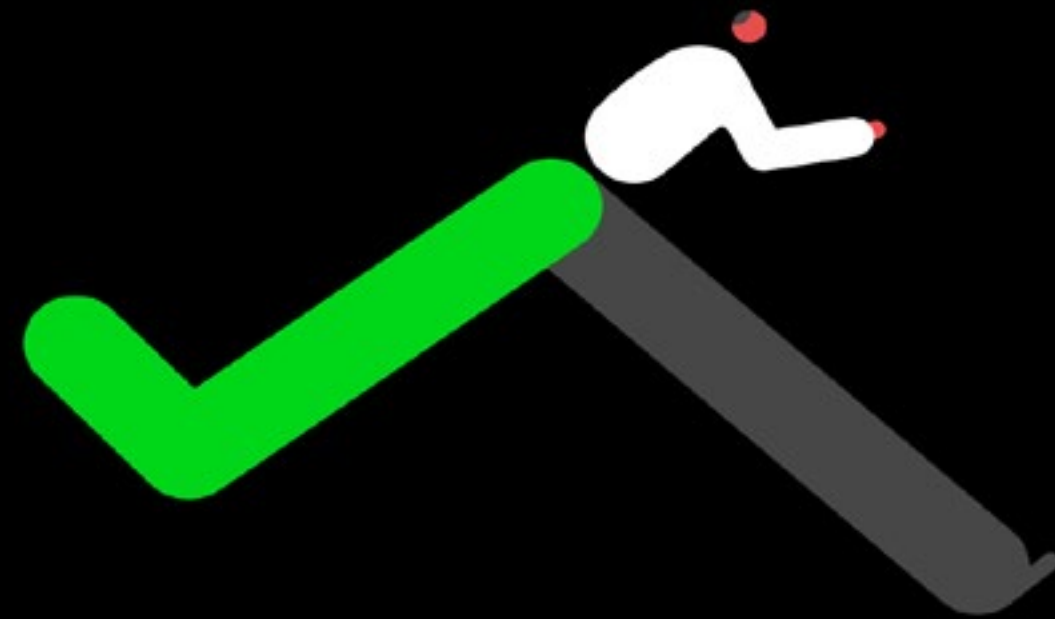
Offer a complete and easy-to-implement solution by enhancing Payroll, ISVs, and APIs integration processes.



Mobile App

Deliver a native mobile app for HR and ESS, allowing employees to have easy and quick access to their information and transactions.

Benefits of migrating to the premium version of Sage HRMS



Benefits of migrating now!

- Automatic access to the latest version of the software.
- The annual subscription includes maintenance and support plus the new improvements.
- Automatic access to My Workforce Analyzer.
- Modernized User Interface (UI) HRMS and Employee Self-Service (ESS).
- Access to ESS via mobile phone.
- No additional costs for business care plans, this is already included in your subscription (Online Support, On-demand appointments, Anytime Learning course and Private tutor session).
- Annual system check.
- 50% off on HRMS Training through Sage University.
- 40% discount on Aatrix Tax Service packages.

Multi-year loyalty discount

As a customer of the existing version of Sage HRMS, you are offered a multi-year loyalty discount for moving to the premium version. This discount is valid for any perpetual item on the HRMS price list that you own at the time of migration.

Period	Discount %
Until March 31, 2023	40%
April 2023 to March 2024	34%
April 2024 to March 2025	27%
April 2025 to March 2026	18%
April 2026 to March 2027	8%

After March 2027, the pricing reverts to the standard annual pricing for the premium version

Would you like to know more?

Please do not hesitate to contact your Sage Business Partner or Sage Account Manager who will gladly respond to any questions pertaining to the migration process, pricing and create a quote for you without any obligation whatsoever.

We are looking forward to hearing from you soon!

Sage HRMS can transform how you manage your people



HR Core. You can manage all your employee related information and processes in a single solution.

Employee Self-Service. A personal HR portal to enable your employees to see and update their personal information, request time off, download payslips, and much more.

Benefits Enrollment. Your employees can make their own benefits selection, and update their marital status, dependents, and beneficiaries.

Benefits Messenger. You can automate the communication of employee benefits enrollment data to health insurance carriers easily and quickly.

Time & Attendance. A 100% web-based solution that collects, analyses, and controls your employees' attendance and labor data.

HRMS Payroll. A comprehensive payroll system that gives you accurate, timely, in-house, and flexible payroll processing.

HR Actions. You can create paperless forms using any fields in Sage HRMS and streamline the collection and approval.

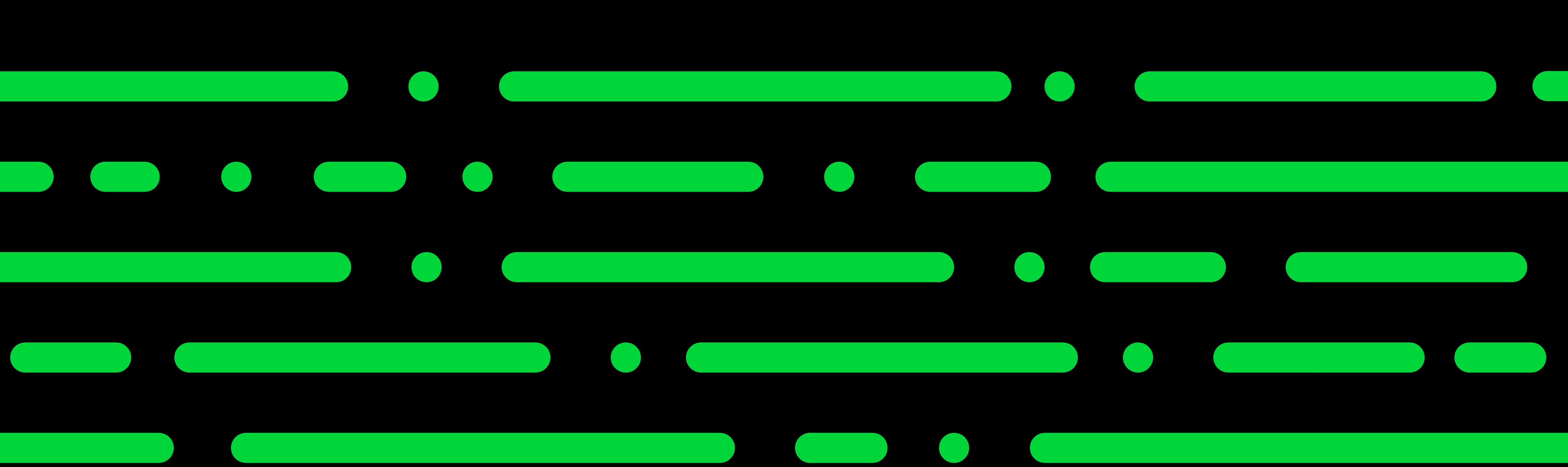
HR Analytics. A web-based reporting and analytics tool that makes it easy to visualize, analyze, and share insights about your business.

Alerts & Workflow. You can closely monitor and track all your business data and improve HR responsiveness.

Applicant Tracking & Onboarding. You can manage your recruiting and onboarding process online in a simple and easy way.

My Workforce Analyzer. You can create the required ACA forms and review a regulations based analysis of your workforce data.

HRMS Training. You can create classes and courses which can be assigned to your employees, mark them as required, and track their progress.



[sagehrms.com](https://www.sagehrms.com)
1866 271 6050



Sage

©2022 The Sage Group plc or its licensors. Sage, Sage logos, Sage product and service names mentioned herein are the trademarks of The Sage Group plc or its licensors. All other trademarks are the property of their respective owners.