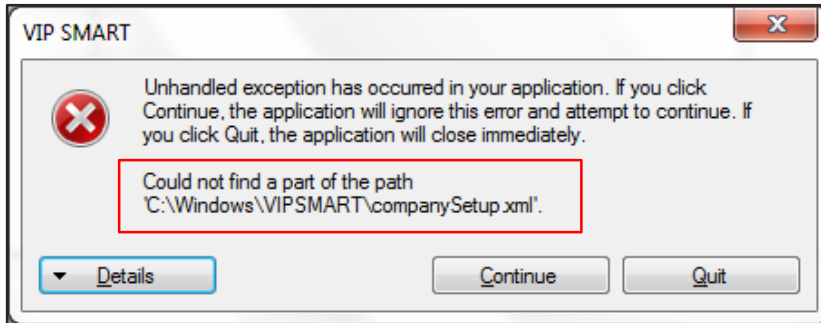


Unhandled Exception: Could not find a part of the path

Problem:

VIP SMART – Unhandled exception has occurred in your application.
Could not find a part of the path

**System Area:**

VIP SMART

Issue Description:

- The VIP system is mapped to a server location e.g. \\server
- The VIP system folders or server name has spaces in them e.g VIP Premier
- The VIP System folders or server name as dashes (-) in the names

Solution:

- IT needs to map VIP to a local drive e.g. V:\, change the VIP Icon and SMART will launch
- IT needs to remove the spaces or replace them with an underscore (_), remap VIP and change the Icon accordingly, SMART will then launch
- IT can map VIP to the IP address, change the Icon accordingly and SMART will then launch.
- If all the settings above are correct, confirm local admin rights on the C:\ and the VIP Directory