



sage University

Sage X3 Cloud 2017 – R3: Managing Global Serial Numbers

Duration: 6:10 minutes



Duration: xx minutes




Important Notice

The course materials provided are the property of The Sage Group plc or its licensors ("Sage"). Please do not copy, reproduce, modify, distribute or disburse without express consent from Sage.

This material is provided as a general guidance for informational purposes only. Accordingly, Sage does not provide advice per the information included. The use of this material is not a substitute for the guidance of a lawyer, tax, or compliance professional. When in doubt, please consult your lawyer, tax, or compliance professional for counsel. This material is provided on an "as is" basis. Sage makes no representations or warranties of any kind, express or implied, about the completeness or accuracy of this training materials. Whilst Sage may make changes to this training materials at any time without notice, Sage makes no commitment to update the training materials every time Sage's products are updated.

The Sage product(s) described herein is/are governed by the terms and conditions per the Sage End User License Agreement ("EULA") or other agreement that is provided with or included in the Sage product(s). Nothing in this document supplements, modifies, or amends those terms and conditions.

© 2017 The Sage Group plc or its licensors. All rights reserved. Sage, Sage logos, and Sage product and service names mentioned herein are the trademarks of The Sage Group plc or its licensors. All other trademarks are the property of their respective owners.



During this learning session, you will learn about:

- ✓ New management of serial numbers

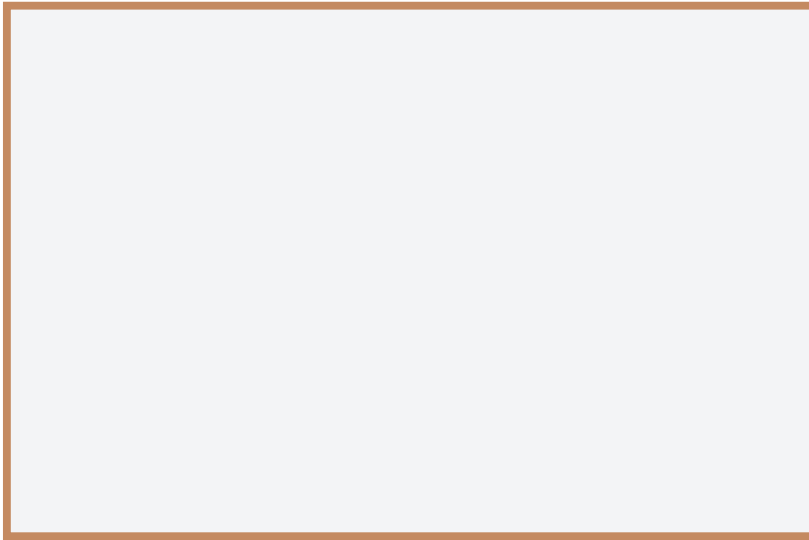
OBJECTIVES

Audio script:

- During this learning session, you will learn about:
 - The new management of serial numbers in received or issued transactions

What are the benefits?

sage



Audio script:

- The benefits of this enhancement includes:
 - Improved serial number management allows for one stock line containing several serial numbers
 - Better usability
 - And increased performance and productivity

New option



Serial no. management

- ☐ Not managed
- ☐ Issued
- ☒ Received/Issued
- ☐ Global Received/Issued

Detailed stock

	Site	Lot	Subl.	Major version	Serial number	Ware...	Location	Loc. cat.	Count L.	U.	Quantity	Chronologic...	PAC-STK...
1	AFG1				\$		AA2	Internal	No	Un		8	399479
2	AFG1				\$		AA1	Internal	No	Un		5	399481
3	AFG1	LOT1			\$		AA1	Internal	No	Un	13	399527	
4	AFG1	LOT2			\$		AA1	Internal	No	Un	7	399525	
5	AFG1	LOT2			\$		AA1	Internal	No	Un	6		

Serial numbers

	Serial number	Ware...	Location	Stork...	Lot	Subl.	St.	Chronologic...	Receipt...	Receipt document type	Receiving document	Line	Issue da...
1	S20		AA1	AFG1	LOT2		A1	399529	02/29/2016	Miscellaneous receipt	MS16FEB54378	3000	
2	S21		AA1	AFG1	LOT2		A1	399529	02/29/2016	Miscellaneous receipt	MS16FEB54378	3000	
3	S22		AA1	AFG1	LOT2		A1	399529	02/29/2016	Miscellaneous receipt	MS16FEB54378	3000	
4	S23		AA1	AFG1	LOT2		A1	399529	02/29/2016	Miscellaneous receipt	MS16FEB54378	3000	
5	S24		AA1	AFG1	LOT2		A1	399529	02/29/2016	Miscellaneous receipt	MS16FEB54378	3000	
6	S25		AA1	AFG1	LOT2		A1	399529	02/29/2016	Miscellaneous receipt	MS16FEB54378	3000	
7	S26		AA1	AFG1	LOT2		A1	399529	02/29/2016	Miscellaneous receipt	MS16FEB54378	3000	
8													

Audio script:

- There is a new option at the Product level called Global Received/Issued for serial number management where one stock line can contain several serial numbers.

Stock movement

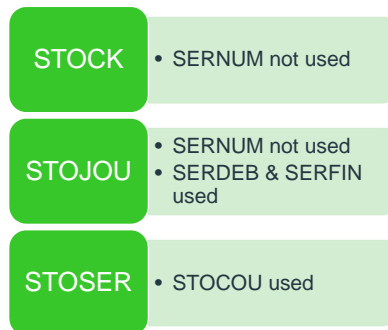


Movements/Products										
	Site	Allocation	Lot	SubL	Major version	Minor version	Starting serial number	Ending serial number	Quant	
1	AFG1	02/29/2016	LOT2				S20	S26		

Audio script:

- Additionally, stock movements now have a range of serial numbers available with the same stock characteristics.

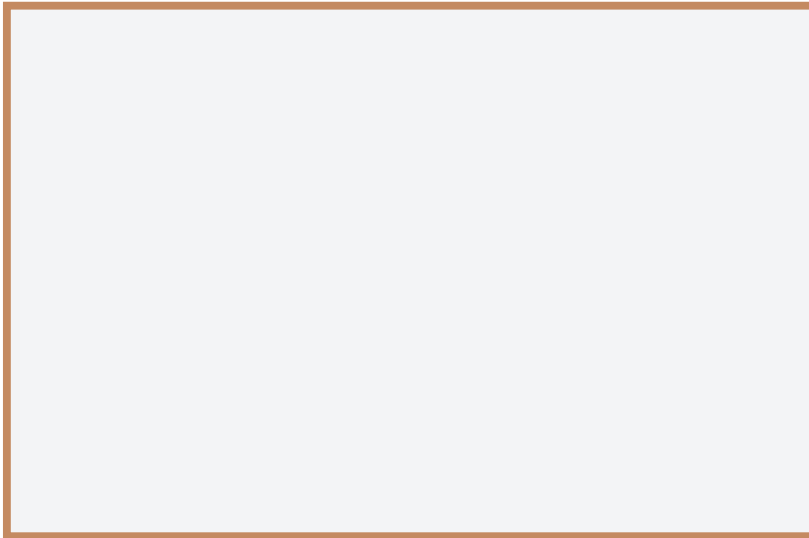
Global Received/Issued option



Audio script:

- With the new global option, there is no longer a serial number in the STOCK table.
- Serial numbers are linked to stock line by adding a stock chronological field (STOCOU) in the STOSER table.
- The Stock movement table (STOJOU) contains a range of serial numbers.
- And, the new table, STOSER, contains the serial number in pending process.

Functional rules



Audio script:

- Some rules to keep in mind include:
[Add the following to the whiteboard as they are mentioned.]
 - The process of entering serial numbers is the same.
 - Negative stock is not allowed.
 - Stock is always managed in stock units.
 - When manipulating a stock, line you must identify the serial numbers.
 - Serial numbers are not managed on putaway orders. They can't be entered when received on a location in pending putaway and must be entered during the putaway.
 - In subcontract BOMs, serial number management is not allowed with components of a product.

- Serial numbers are not identified on detailed allocations on orders, work orders, Sage Sales tax orders, and project tasks.
- Serial numbers are identified on the detailed allocations on preparation, delivery, and supplier returns.
- There is no automatic determination of serial numbers in the automatic allocations script.
- There is an automatic determination of serial numbers in the automatic stock to issue.



Learn about the new Global Serial Number management option

In this demonstration, you will see how to set a product with the new Global Serial management option and see the resulting stock line in the Miscellaneous receipts window.

Audio script:

- In this demonstration, we will take a look at the new Global Serial Number option for managing serial numbers.
 - First, we will set up a product with the Global Received/Issued option selected in the Serial no. management section. Note that the product is lot and serial managed.

Record has been created

All > Stock > Receipt/issue transactions

Miscellaneous receipts ALL : Misc Stock Receipts Full Entry

Stock site *
NAG11

Allocation date *
08/17/17

Warehouse

Entry
MRCNA0110004

Transaction group
010

Dock location

Description

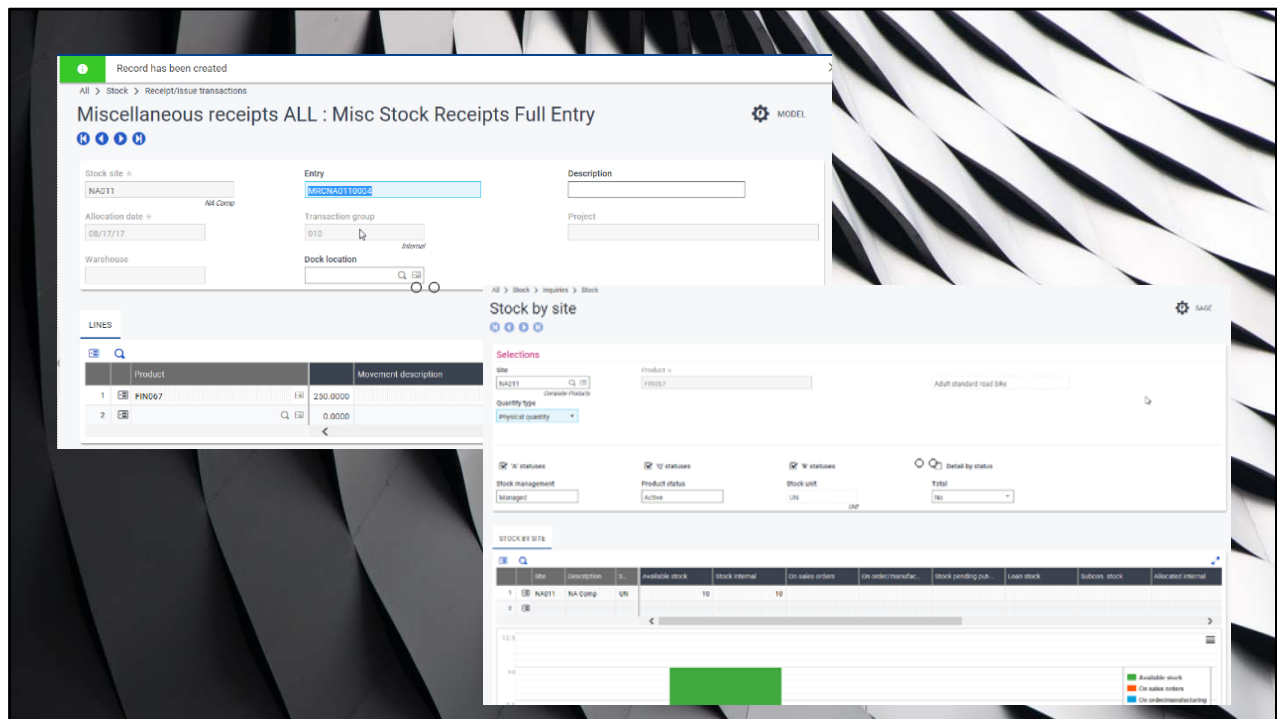
Project

LINES

	Product	Movement description	Cost Center	Market
1	FIN067	250.0000		
2		0.0000		

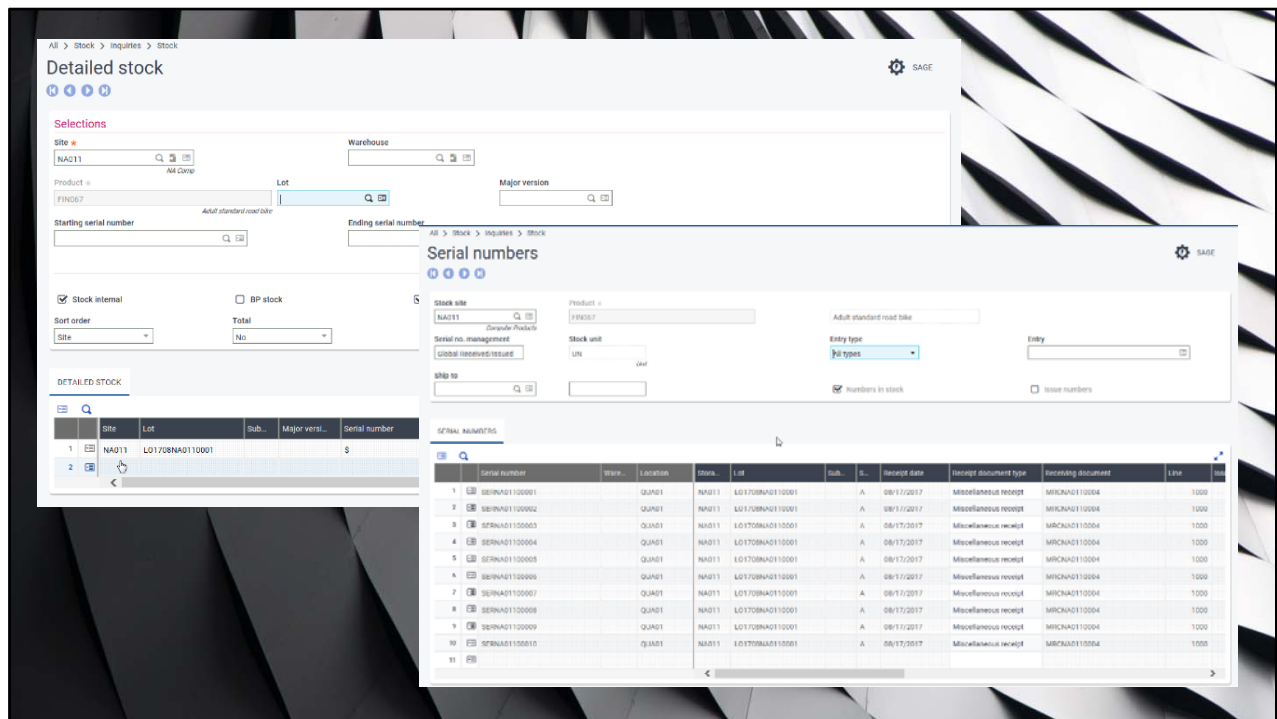
Audio script:

- Next, let's go to Miscellaneous receipts under the Stock module to receive 10 of the product that we previously set up.
 - We'll enter our site and product
 - And enter a quantity of 10 with a price of \$250.
 - Then, we'll click Create.
 - We'll click OK in the Lots complement window.



Audio script:

- At the Action icon for the product, select Stock by Site.



Audio script:

- On the Stock by site tab, select the Action icon at the site line and select Detailed stock.
- Select the Action icon for the line on the Detailed stock tab and then select Serial numbers.
- Now you can see the sequential serial numbers for the stock line.
- Notice in the Serial numbers window, more than one serial number displays per stock line.

SUMMARY

sage

After completing this learning session, you are able to...

- ✓ New management of the serial numbers



Audio script:

After completing this learning session, you have learned about:

- ✓ The new management of the serial numbers and how the new Global Serial Number option allows you to view multiple serial numbers per stock line.

Thank you for viewing this topic

Audio script:

- Thank you for watching this video
- For more information about Sage X3 and Sage Learning Services, visit the Sage University web site.