



Sage X3 Flash replacement update

*Applies to Sage X3 versions PU9 and
earlier*

Revised December 2020



This purpose of this document is to provide you with an update on the impact on older versions of Sage X3 affected by the deprecation of Flash after 31st December 2020.

Important notes:

In accordance with the Sage X3 lifecycle policy Sage X3 versions 8 and earlier have now reached end of maintenance and as such no patches or hotfixes will be made available. Sage X3 Version 9 is currently in Extended (Lifeline) maintenance and Sage has no plans to deliver patches or hotfixes except for Level 0 hotfixes.

If you are still using one of these older versions of Sage X3 we strongly recommend that you look to upgrade to the latest version of Sage X3 – Version 12 - as soon as possible to ensure continued support and innovation.

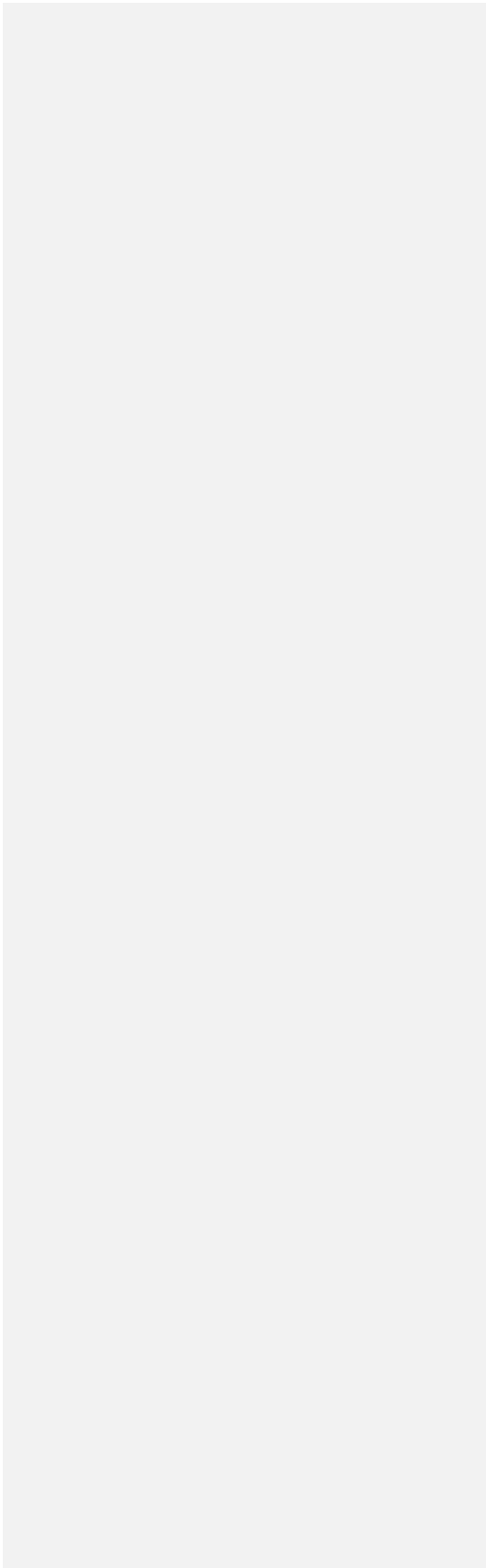
Your feedback and questions are important

Your feedback is valuable. If you have questions not covered in this document, please contact Sage Customer Support.

Contents

- Impact to Sage X3 version 6..... 3**
 - 1. All features using the multi-graph component..... 4
 - 2. All features using the agenda component..... 8
 - 3. Gantt graphical representation 9
 - 4. Graphical requester 9
 - 5. Visual processes editor 9
 - 6. Visual processes display 9

- Impact to Sage X3 version 7, 8 and 9.....10**
 - Functionality impacted: 10



Impact to Sage X3 Version 6

Sage X3 Version 6 provides 2 clients:

- Desktop based (Fat) client
- Web client (Internet Explorer 11 only)

Web client

The Web client will no longer work if Flash has been deactivated (it cannot start). Unless you can upgrade to the current version of Sage X3 the only option will be to move the Fat Windows client. The customers willing to use V6 must switch to the fat client.

Fat client

The fat client will continue to work, but with limitations due to the use of flash. Every screen using a flash component will no longer display the corresponding data - however the other non-flash related elements in the screen can still be used.

The impact caused by the depreciation of Flash are described on the following pages:

1. All features using the multi-graph component.

Example: WIP cost inquiry

The screenshot shows the SAP WIP cost inquiry interface. On the left is a list of work orders with columns for Order number, Release routing, Work center, Start, and Tracking flag. The main area contains a multi-graph component with a pie chart on the left and a bar chart on the right. A red arrow points from the pie chart to the bar chart. The pie chart is divided into segments for Material (red), Labor (green), Machine (blue), Sub-contracted (yellow), and Overhead (grey). The bar chart compares Actual and Standard costs for Material and Labor.

The presentation in grid remains available (the switch is located here)

This screenshot shows the same SAP WIP cost inquiry interface but with the grid view selected. A red arrow points from the text above to the 'Grid' button in the top right corner of the multi-graph component. The main area displays a table with columns for Actual, Standard, Reject, Variance, and Variance (%). Below this is a detailed table with columns for Description, Actual cost, and Standard cost.

	Actual	Standard	Reject	Variance	Variance (%)
Material	1,920.23	1,920.23			0.00
Labor	58.00	82.00		24.00	0.00
Machine					0.00
Sub-contracted					0.00
Overhead		13.05		13.05	0.00
Totals	1,978.23	2,015.29		37.05	0.00

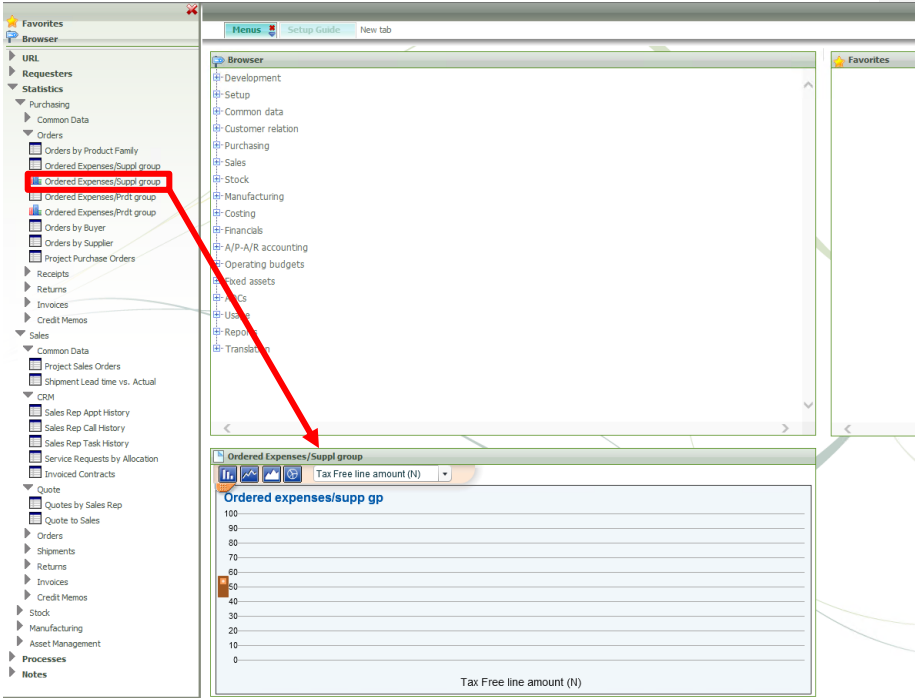
Description	Actual cost	Standard
1 Material	1,920.23	1,920.23
2 Labor	58.00	82.00
3 Machine		
4 Sub-contracted		
5 Overhead		13.05

A number of Sage X3 functions have screens that use this type of graphical representation. The chart below provides a list of impacted screens:

Screen	Description
CONSMWK2	Load inquiry
CONSSHS2	Stock history
CQG1	Graph currency amount
CQG2	Graph top 10 customers
DER1	Book vs Tax provision
DPP1	Depreciation plan
DPPARC	Depreciation plan
FASVISPLN1	Depreciation plan display
GRAPHGEN	Graph
GRHPI1	Invoice types by period
GRHPI2	Invoices and payments / period
GRHPI3	Credit memos by supplier
GRHPI4	Invoices by payment approval level
GRHPN1	Return types / period
GRHPN2	Returns and credits / period
GRHPN3	Returns by reason
GRHPN4	Returns by supplier
GRHPO1	Tax excl orders / period
GRHPO2	Detail tax excl orders / period
GRHPR1	Receipts and invoices / period
GRHPR2	Receipts and returns / period
HISCOST2	Cost history
HISMFC2	Production cost history
ITC4	Graph
ITC5	Multiple graphs
ITCMATCH1	Cost comparison
ITCMATCH2	Material / subcontracted
ITCMATCH3	Machine / labor
ITCMATCH4	Overhead
MBENCHW6	Graph
MFC1	Production cost price
MFC2	Production cost price
MFS2	WO status
MFS3	WO status
MFS4	WO status
MWI1	WIP
MWS4	Work center
OPSG	Graphical load
ORAPROP1	Oracle properties
ORDG1	Graph stock in process
ORDG2	Graph stock in process

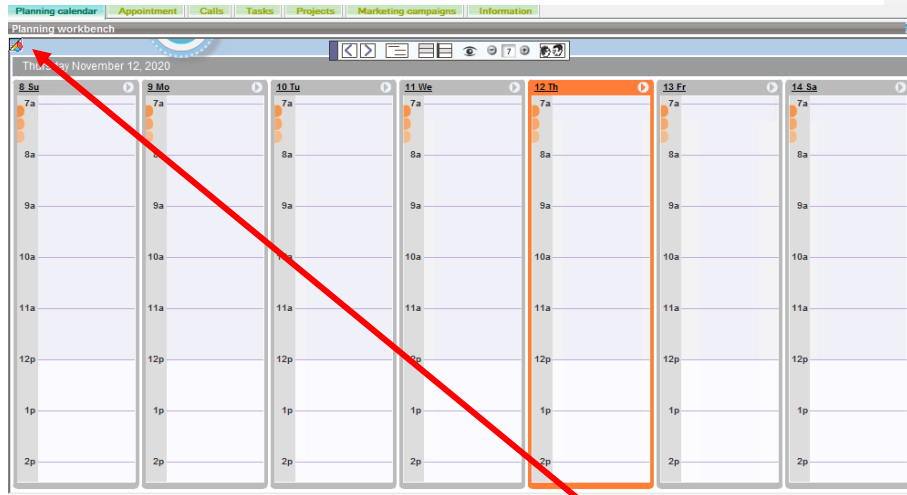
Screen	Description
PLG6	Committed budget analysis
POH2	Supplier orders
PWI1	In progress
RPR1	Provisions for renewal
SDIG	Graph
SGD1	Tax excl. deliveries by cat.
SGD2	Return reason ranking
SGD3	Shipments by period
SGI1	Invoices by period
SGI2	Invoices chart
SGI3	Invoices by sales rep
SGO1	Tax excluded orders by category
SGO2	Orders chart
SGO3	Tax excluded orders by status
SGQ1	Ex-tax quote
SGQ2	Quote ranking
SGQ3	Quote by sales rep
SHSG1	Stock history graph
SHSG2	Stock history graph
SHSG3	Stock history graph
SMJG2	Graph
SMVG1	Graph
SMVG2	Graph
SORD1	Available stock graph
SPRG1	Projected stock graph
SPRG2	Projected stock graph
SQI2	Invoices chart
WE3ALL2	Supplier orders
WE3STD2	Supplier orders
WE3TRA2	Supplier orders
WMGDDALL	Budget positions
WMGDDSTD	Budget positions
WMSFCSTD	Stock by site
WMSTASTD	Statistical inquiry
WMSTBSTD	Statistical inquiry
WNVEN024	Query tool
WNWAS002	Query tool

The multi-graph component is also used for some widgets that can be displayed on the portal. These widgets, identified by a small graph icon, will no longer work:

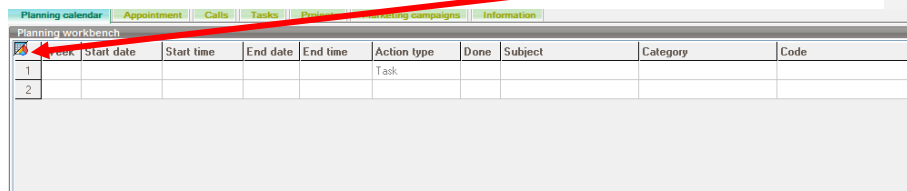


2. All features using the agenda component.

Example : CRM agenda



The presentation in grid remains available (the switch is located here)

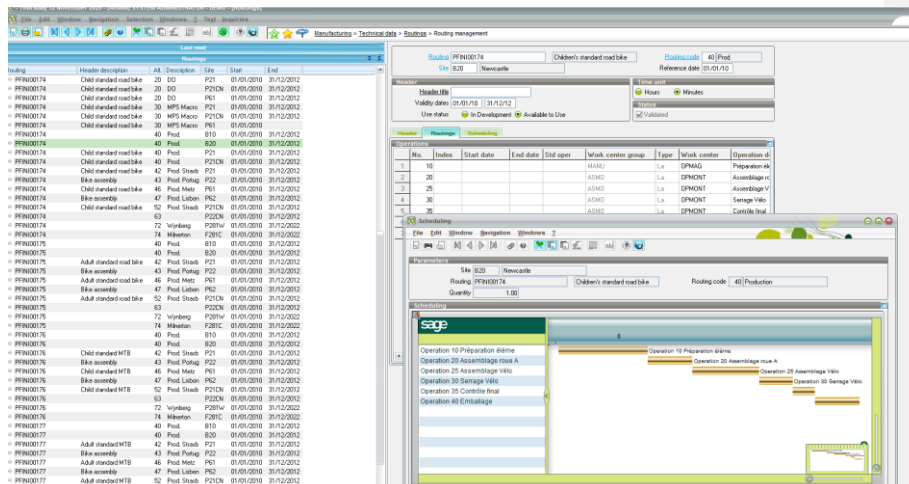


The following functions are impacted:

- Planning workbench (CRM)
- Service responses

3. Gantt graphical representation

Example: routing, when using the *Graph* button:



The following functions are impacted:

- Cost history
- Available employees (when searching for a resource in CRM)
- Graphical scheduling (routing)
- Resource reservation (CRM)

4. Graphical requester

You can no longer create or update graphical requests; however existing graphical requests can still be run.

5. Visual processes editor

You can no longer use the visual process editor.

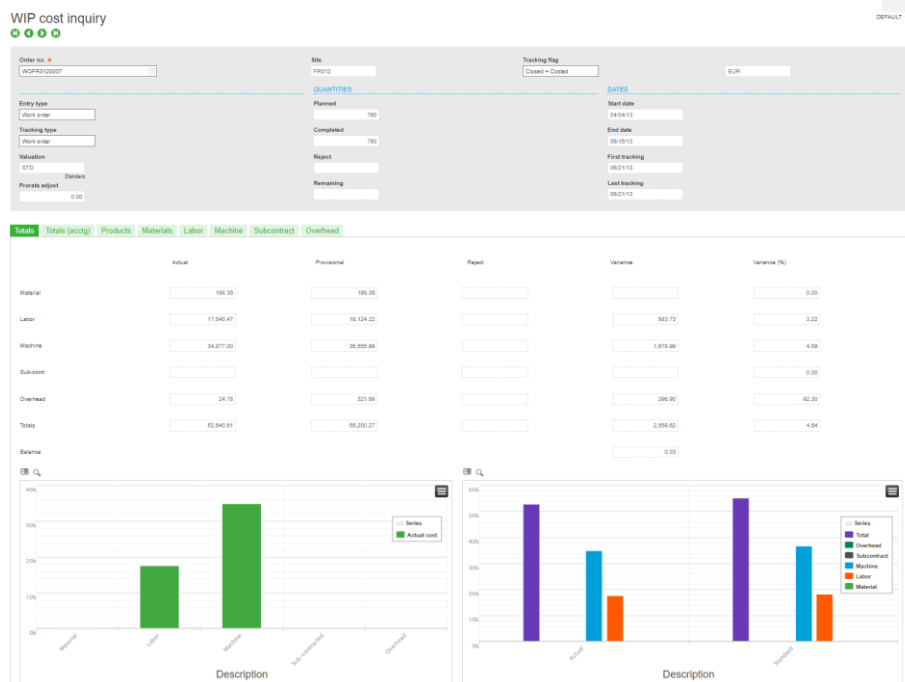
6. Visual processes display

The visual process display will no longer work. Users will have to navigate through the classic menus.

Impact to Sage X3 Versions 7, 8 and 9

With the release of Sage X3 version 7 the web client is supported by multiple browsers, and HTML 5 has been replaced Flash for the display of visual processes.

In addition, both the multi-graph and the WIP cost inquiry no longer use Flash, so will continue to function.



Functionality impacted:

After December 31st 2020 the following graphical features in Sage X3 versions 7,8 and 9 will no longer display any content. Where you have the option of switching between a tabular and graphical display, the tabular display will still function as expected.

1. Any function using the Flash Calendar (mainly in CRM module)
2. Gantt graphical representation
3. Graphical query editor. Please note existing graphical queries can continue to be executed.
4. Visual process editor.