

Sage 50 Payroll **National Insurance** **update**

Presented by Duncan Morgan

Sage



Housekeeping

The image shows a mobile application interface for a 'Questions' feature. The interface is divided into a dark grey sidebar on the left and a light grey main content area on the right. The sidebar contains several icons: a microphone icon (muted), a question mark icon, a document icon, an information icon, and an 'Exit' button. The main content area has a title 'Questions' with a close button, a question mark icon, and a text prompt 'Want answers?' with a dashed arrow pointing to a text input field labeled 'Ask the staff a question'. A blue 'Send' button is at the bottom right. Four callout boxes with green borders and lines pointing to specific icons provide instructions: 'Your microphone is muted automatically' points to the microphone icon; 'Download a handout' points to the document icon; 'Send us your questions' points to the question mark icon; and 'Switch to full screen' points to the information icon.

Your microphone is muted automatically

Download a handout

Send us your questions

Want answers?

Ask the staff a question

Exit

Send

Contents

Install top tips

Tips and tricks to ensure a smooth installation of your update

Reversal of NI increase

What's changing and where to find this in the software

Removing payslip comments

Using Global Changes to remove payslip messages

Quiz

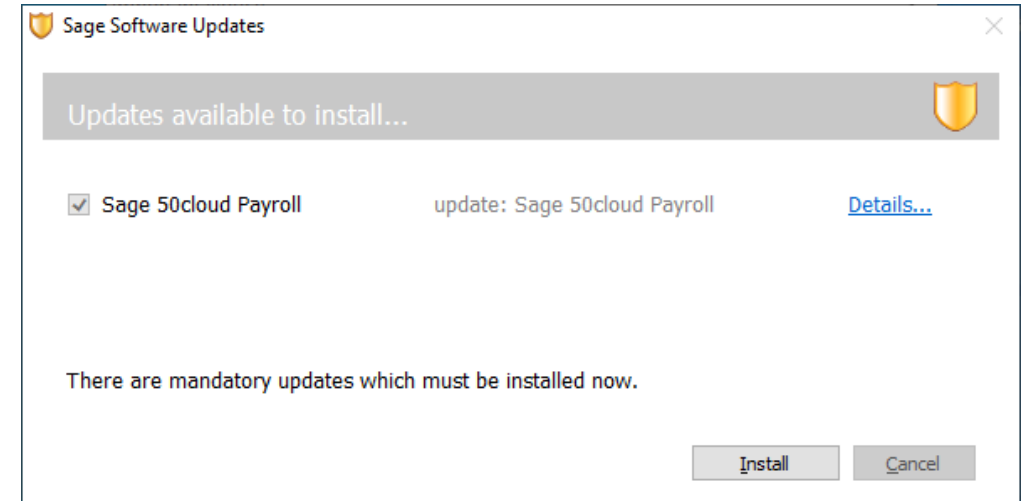
Further support and Questions

Install top tips



Download your update

- Download and install using **Automatic Updates**
- Download manually from our Help Centre



Automatic Updates prompt you when the update is available to download and install



Download update – <https://gb-kb.sage.com/portal/app/portlets/results/viewsolution.jsp?solutionid=200427112430229>

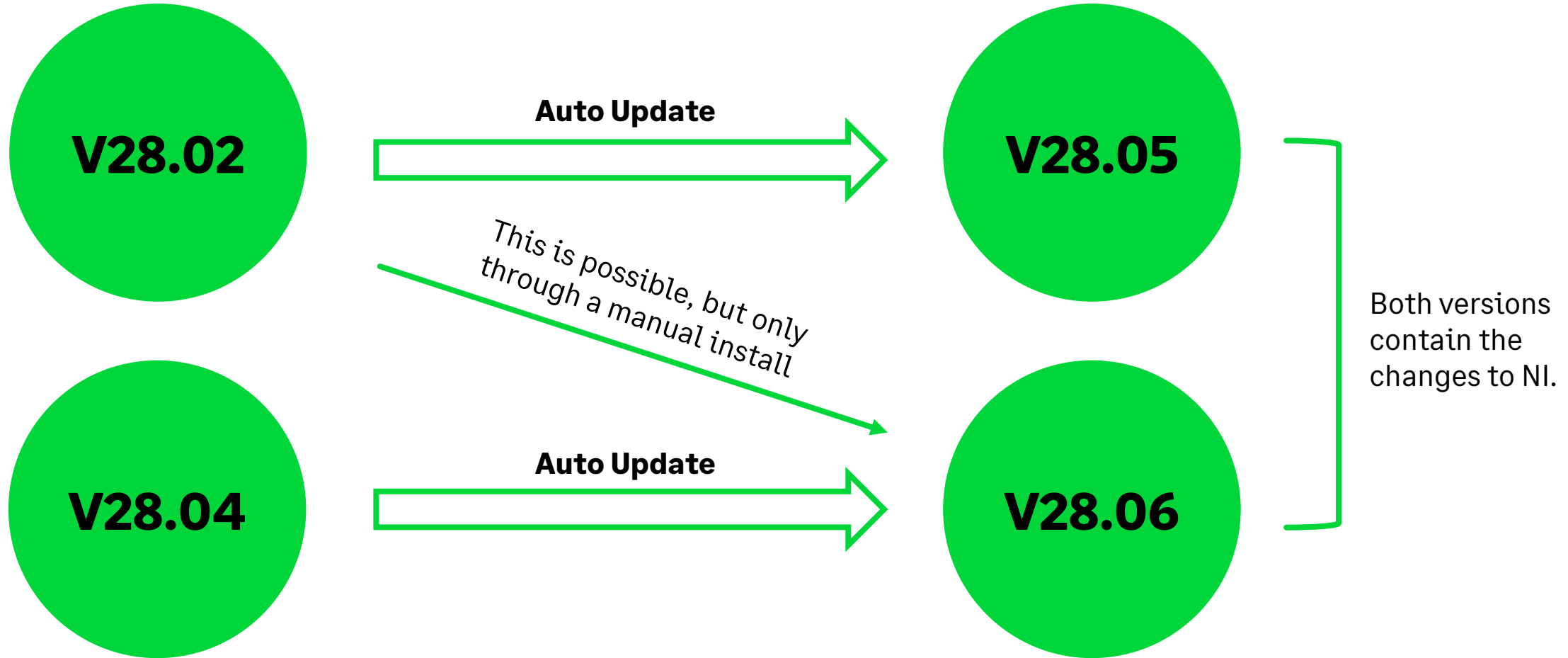
Install top tips

- Optimise your data – this option can be run at any time
- Check program directory
- Run installation as administrator
- If installing on a network, ensure all connected installations are updated



More info – <https://gb-kb.sage.com/portal/app/portlets/results/viewsolution.jsp?solutionid=221018095617767>

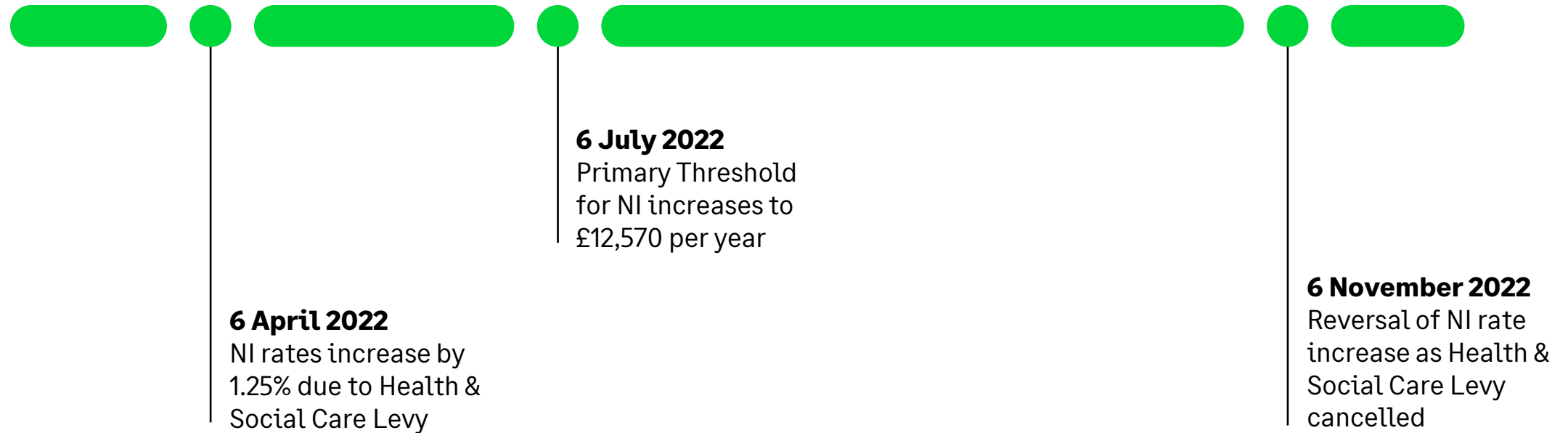
Version Numbers



National Insurance changes



National Insurance changes



NI legislation

Legislation Settings - 2022/2023

PAYE **NI** SSP Parental Pay Car Details Student/Postgraduate AEO Rates Minimum Wage Child

NI bandwidths and rates effective from **06/07/2022** for Employees

Earnings Bands

Earnings Limit	Weekly	Monthly	Yearly
Lower Earnings Limit	123.00	533.00	6396.00
Secondary Threshold	175.00	758.00	9100.00
Primary Threshold	242.00	1048.00	12570.00
Freeport Upper Secondary Threshold	481.00	2083.00	25000.00
Upper Earnings Limit	967.00	4189.00	50270.00

Rates

National Insurance Category: A - Standard Rate Contributions

Weekly Earnings	Monthly Earnings	Yearly Earnings	Employer Rate	Employee Rate
123.01 - 175.00	533.01 - 758.00	6396.01 - 9100.00	0.00	0.00
175.01 - 481.00	758.01 - 2083.00	9100.01 - 25000.00	15.05	N/A
242.01 - 967.00	1048.01 - 4189.00	12570.01 - 50270.00	N/A	13.25
481.01 - 967.00	2083.01 - 4189.00	25000.01 - 50270.00	15.05	N/A
967.01 and over	4189.01 and over	50270.01 and over	15.05	3.25



Legislation Settings - 2022/2023

PAYE **NI** SSP Parental Pay Car Details Student/Postgraduate AEO Rates Minimum Wage Child

NI bandwidths and rates effective from **06/11/2022** for Employees

Earnings Bands

Earnings Limit	Weekly	Monthly	Yearly
Lower Earnings Limit	123.00	533.00	6396.00
Secondary Threshold	175.00	758.00	9100.00
Primary Threshold	242.00	1048.00	12570.00
Freeport Upper Secondary Threshold	481.00	2083.00	25000.00
Upper Earnings Limit	967.00	4189.00	50270.00

Rates

National Insurance Category: A - Standard Rate Contributions

Weekly Earnings	Monthly Earnings	Yearly Earnings	Employer Rate	Employee Rate
123.01 - 175.00	533.01 - 758.00	6396.01 - 9100.00	0.00	0.00
175.01 - 481.00	758.01 - 2083.00	9100.01 - 25000.00	13.80	N/A
242.01 - 967.00	1048.01 - 4189.00	12570.01 - 50270.00	N/A	12.00
481.01 - 967.00	2083.01 - 4189.00	25000.01 - 50270.00	13.80	N/A
967.01 and over	4189.01 and over	50270.01 and over	13.80	2.00

Directors NIC

- Directors will use adjusted NIC rates for annual basis calculations.
- Directors (Annual basis) will use the new rates as soon as the update is installed.
- Directors (Pro-rata basis) will use the same rates as employees until recalculation in final period of tax year or if director leaves.



More info – <https://gb-kb.sage.com/portal/app/portlets/results/viewsolution.jsp?solutionid=221026140517587>

Directors NIC

Legislation Settings - 2022/2023

PAYE NI SSP Parental Pay Car Details Student/Postgraduate AEO Rates Minimum Wage Child

NI bandwidths and rates effective from 06/11/2022 for Directors

Earnings Bands

Earnings Limit	Weekly	Monthly	Yearly
Lower Earnings Limit	123.00	533.00	6396.00
Secondary Threshold	175.00	758.00	9100.00
Directors Primary Threshold	229.00	992.00	11908.00
Freeport Upper Secondary Threshold	481.00	2083.00	25000.00
Upper Earnings Limit	967.00	4189.00	50270.00

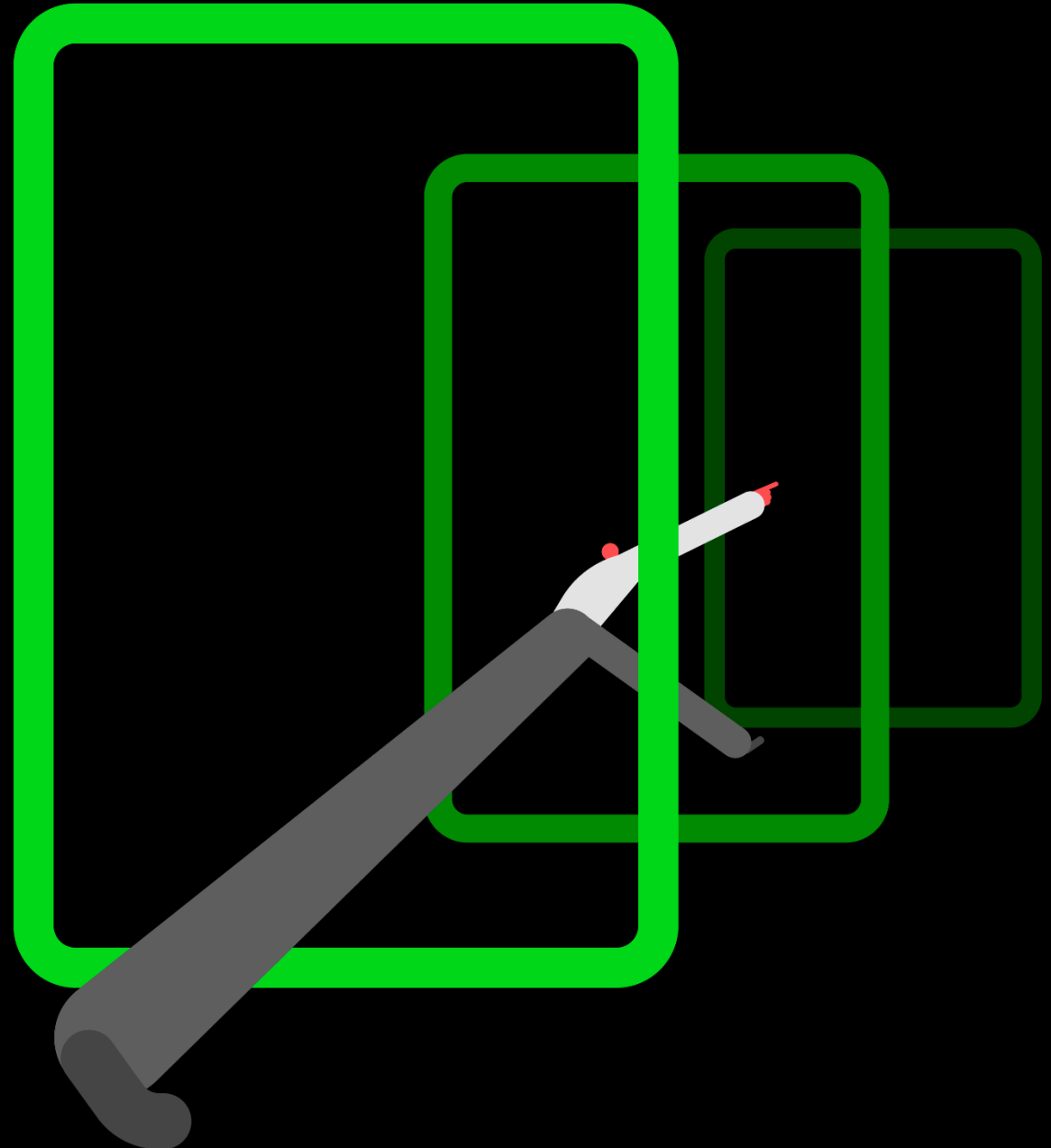
Rates

National Insurance Category A - Standard Rate Contributions

Weekly Earnings	Monthly Earnings	Yearly Earnings	Employer Rate	Employee Rate
123.01 - 175.00	533.01 - 758.00	6396.01 - 9100.00	0.00	0.00
175.01 - 481.00	758.01 - 2083.00	9100.01 - 25000.00	14.53	N/A
229.01 - 967.00	992.01 - 4189.00	11908.01 - 50270.00	N/A	12.73
481.01 - 967.00	2083.01 - 4189.00	25000.01 - 50270.00	14.53	N/A
967.01 and over	4189.01 and over	50270.01 and over	14.53	2.73

Director NI rates adjusted based on 7 months at increased rates (+1.25%) and 5 months at previous rates.

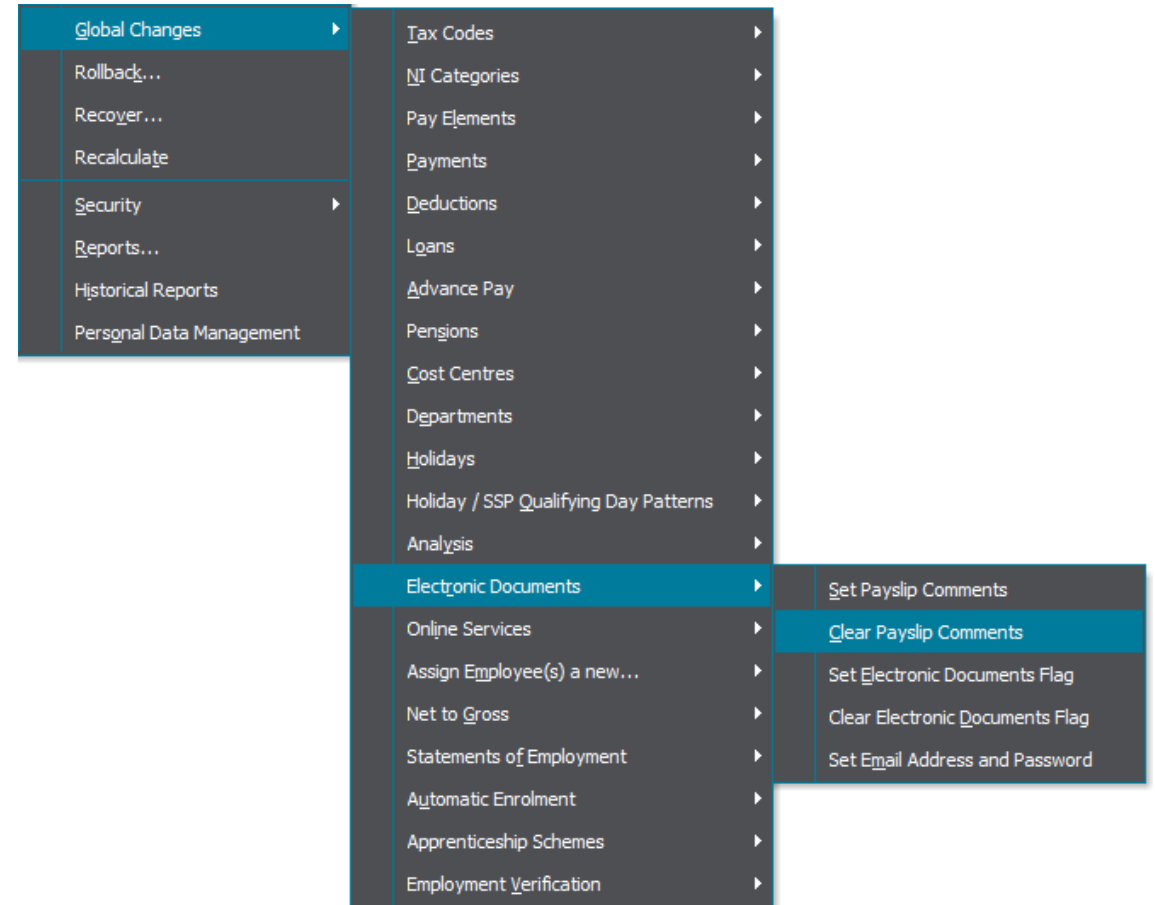
Removing payslip messages



Removing payslip messages

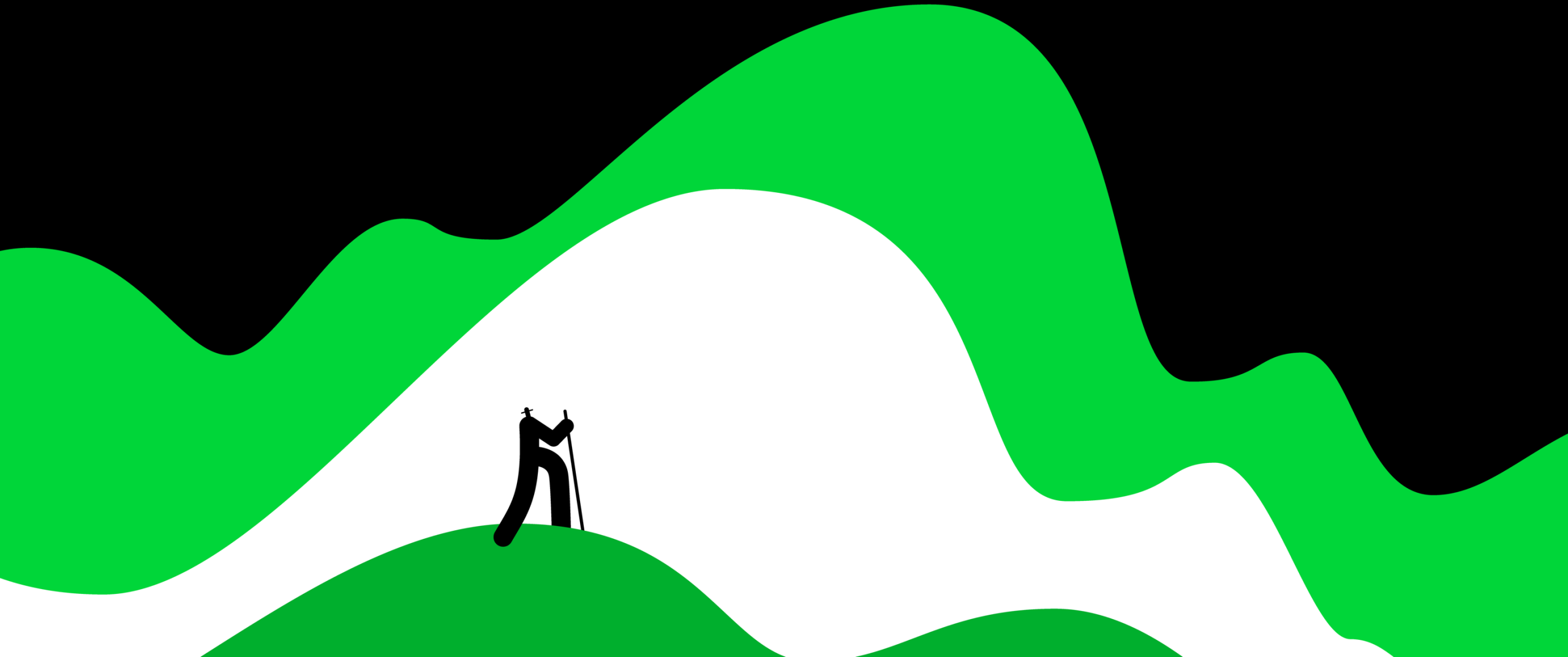
To remove payslip comments:

- Use Global Changes
- Edit Payslip Comment in employee record



More info – <https://gb-kb.sage.com/portal/app/portlets/results/viewsolution.jsp?solutionid=200427112349826>

Quiz



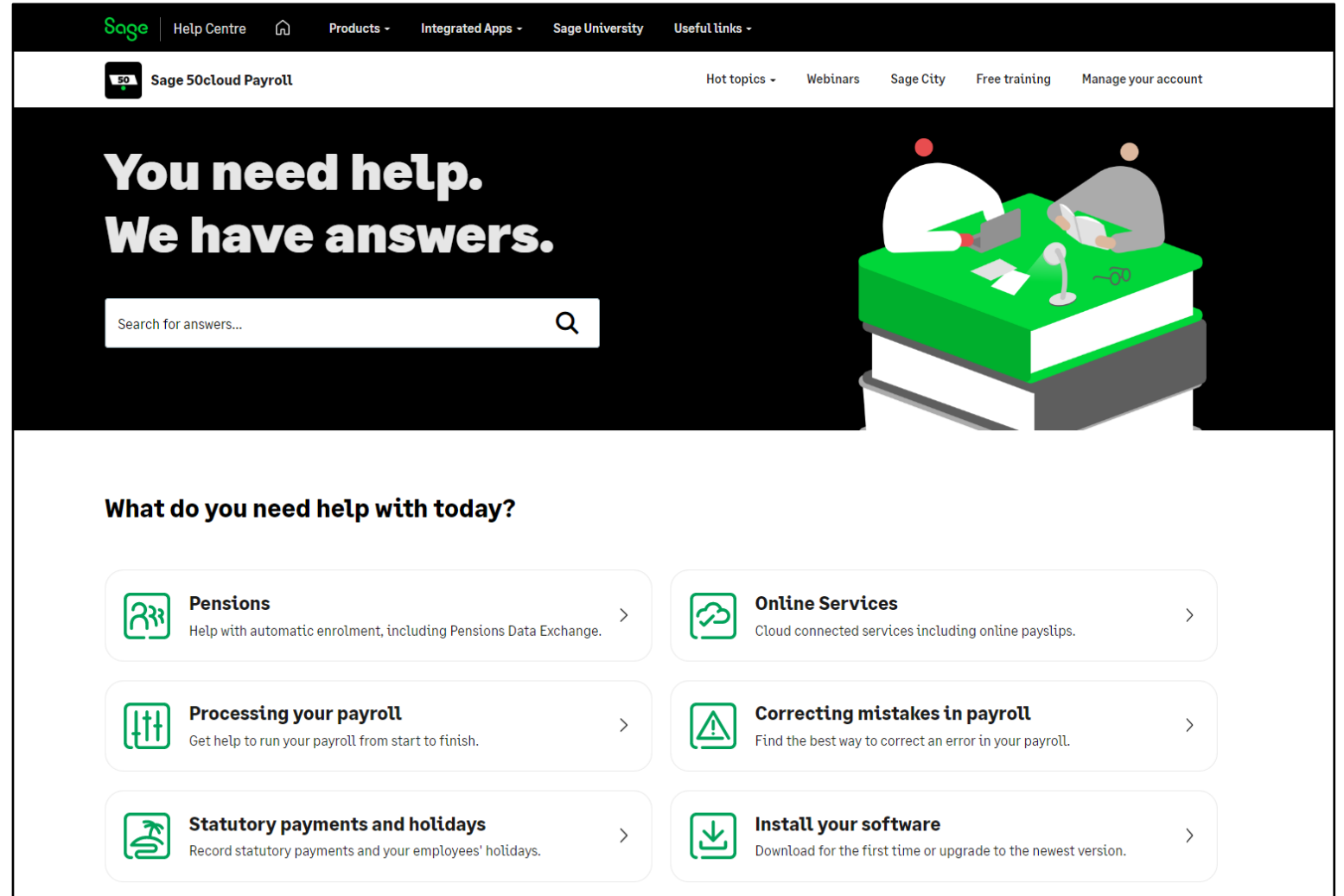
Further support



Help Centre

www.sage.co.uk/help

- Search our knowledgebase
- Support guides
- Webinars
- Videos
- Get in touch



The screenshot shows the Sage Help Centre interface for Sage 50cloud Payroll. The top navigation bar includes the Sage logo, 'Help Centre', 'Products', 'Integrated Apps', 'Sage University', and 'Useful links'. Below this, the specific product 'Sage 50cloud Payroll' is highlighted, with additional links for 'Hot topics', 'Webinars', 'Sage City', 'Free training', and 'Manage your account'. The main header features the text 'You need help. We have answers.' and a search bar with the placeholder 'Search for answers...'. To the right of the search bar is an illustration of two people sitting at a desk with a computer, representing customer support. Below the search bar, a section titled 'What do you need help with today?' lists six categories of help, each with an icon and a brief description:

- Pensions**: Help with automatic enrolment, including Pensions Data Exchange.
- Online Services**: Cloud connected services including online payslips.
- Processing your payroll**: Get help to run your payroll from start to finish.
- Correcting mistakes in payroll**: Find the best way to correct an error in your payroll.
- Statutory payments and holidays**: Record statutory payments and your employees' holidays.
- Install your software**: Download for the first time or upgrade to the newest version.

It takes **more than software and solutions** to make a business work.

That's why we created **Sage Membership**, so you can grow and learn, from a community of real business experts.

What is Sage Membership ?

Sage University – [Sageu.com](https://www.sageu.com)


Sage City – [Sagecity.com](https://www.sagecity.com)

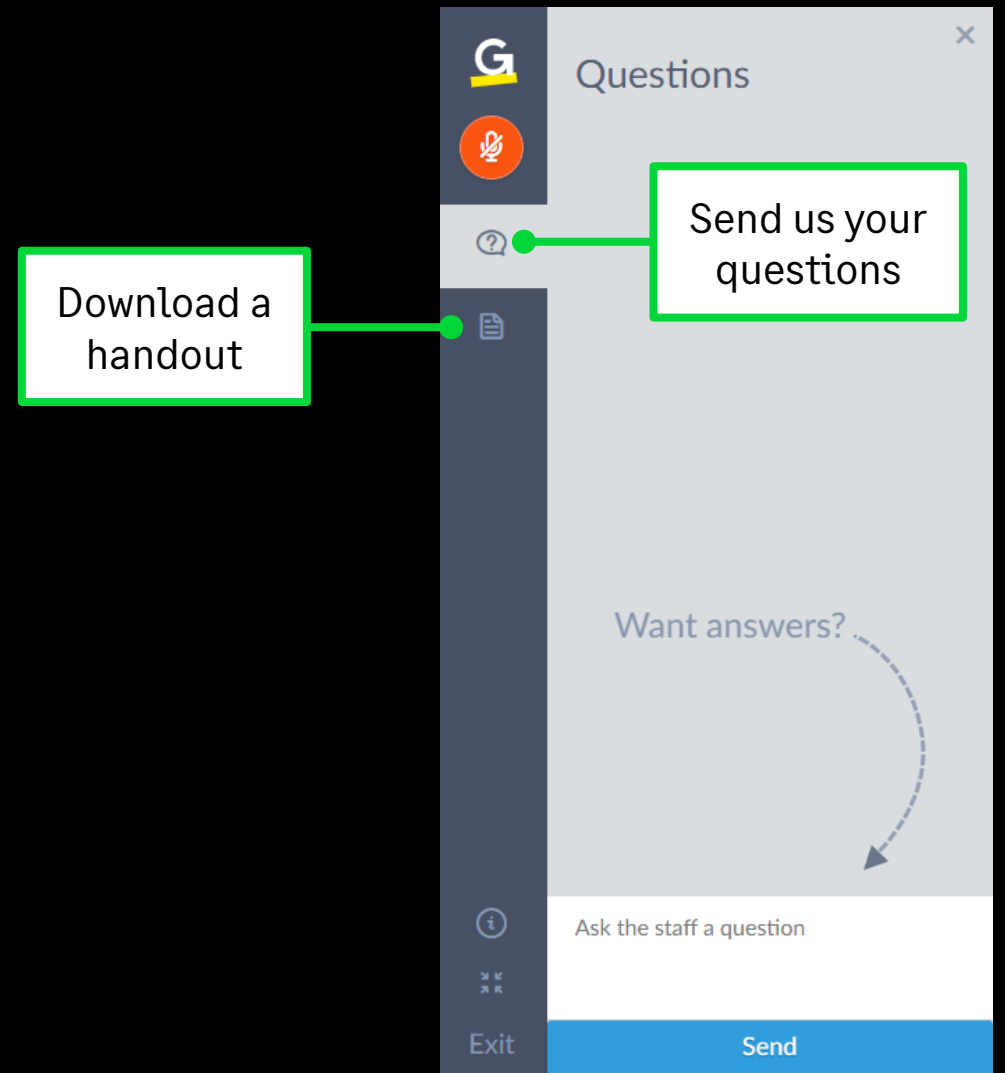
Sage Masterclass

Visit [sage.com/uk/masterclass](https://www.sage.com/uk/masterclass) to find out more

Questions

Submit your questions in the Q&A now!

 This part of the webinar has no sound.



Thank you!

