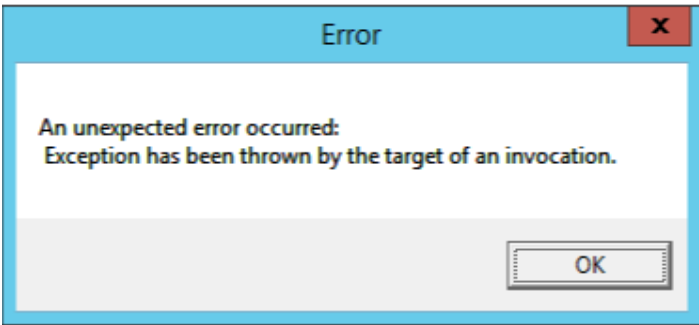


Article Outline	'An unexpected error occurred: Exception has been thrown by the target of an invocation' BIC report error	
Article Date	2019/04/10	
Knowledge Type	Solving an error message	
Knowledge Activity	Reporting/Printing	
Application Version	V9.20	
Application Edition	<input checked="" type="checkbox"/> Evolution Standard / Sage 100 Evolution	<input checked="" type="checkbox"/> Evolution Premium / Sage 200 Evolution
Primary Module	Sage Intelligence	
Secondary Module	Sage Intelligence	
Knowledge Source	Incoming Customer Query	

Description of Error message

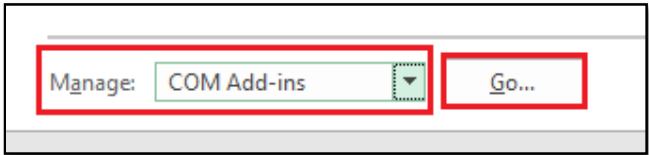
The following error message may display when running a Sage Intelligence (BIC) report:



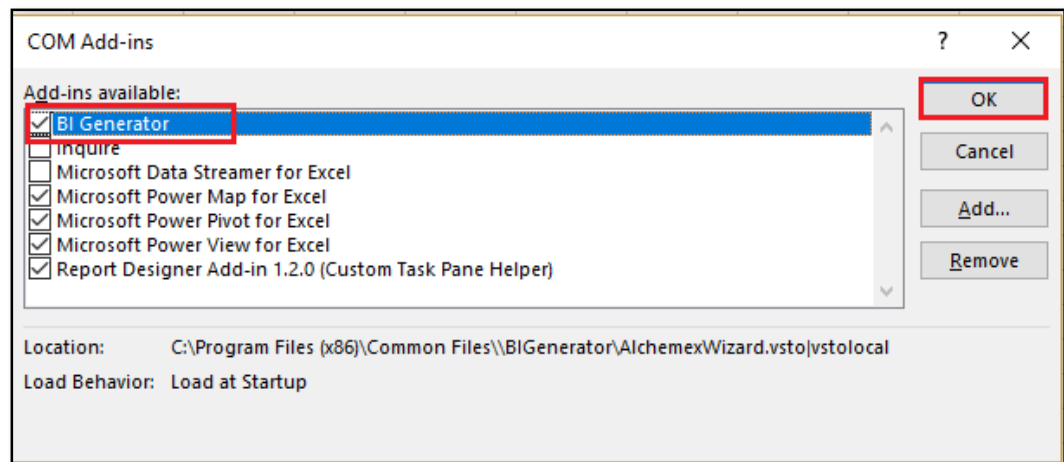
Solution / Details

The following steps explain how to resolve the abovementioned query:

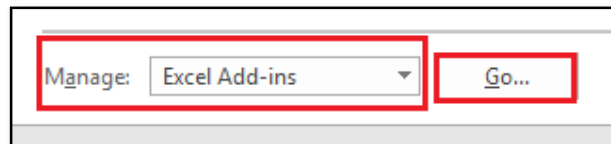
1. Open MS Excel and go to **File | Options | Add-ins**
2. At the bottom of the screen, select the **COM Add-ins** option and click the **Go..** button.



3. On the COM Add-ins screen, select the **BI Generator** option and click OK to save the change.



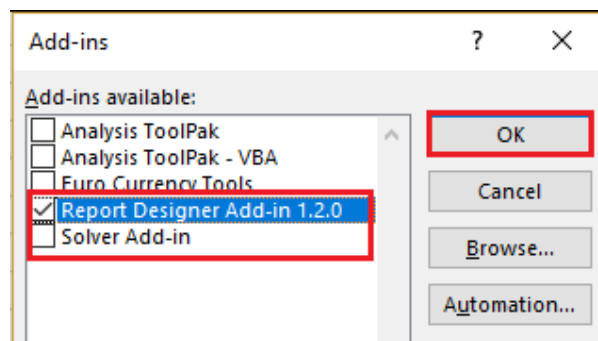
4. Again, within MS Excel go to **File | Options | Add-ins**
5. At the bottom of the screen, select the **Excel Add-ins** option and click the **Go..** button



6.

7. On the Add-in screen, select the **Report Designer** option below, and click the OK button to save the change.

Also ensure the **Solver Add-in** option is unselected.



8. Rerun the BIC report/s which should now work fine.

***Disclaimer:** These articles refer to possible solutions and a platform to share information. Each article describes a method that solved a query (knowledge gathered from previous sites) and how Sage Evolution should operate. These articles make reference to a specific Sage Evolution version, however the thought process can be generalised. Please note the information contained in these articles should be treated as guidelines and adapted to accommodate differences in business processes and IT environments. Articles may not be applicable to all environments. If this article did not resolve your query please contact the Sage Evolution Support Department directly on: +27 (0) 86 112 6837.*