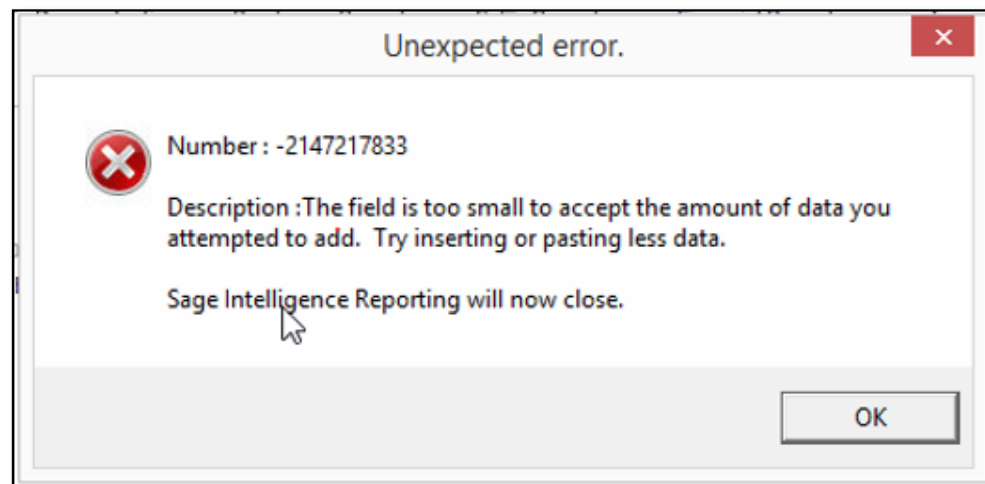


Article Outline	'The field is too small to accept the amount of data you attempted to add' Sage Intelligence error	
Article Date	2017/11/21	
Knowledge Type	Solving an error message	
Knowledge Activity	Reporting/Printing	
Application Version	V7.20.4.000	
Application Edition	<input checked="" type="checkbox"/> Evolution Standard / Sage 100 Evolution	<input checked="" type="checkbox"/> Evolution Premium / Sage 200 Evolution
Primary Module	Company Opening/Log on	
Secondary Module	Sage Intelligence	
Knowledge Source	Incoming Customer Query	

Description of Error message

The following error message may display when

- Logging into an Evolution Branch Accounting company, or
- Opening the Sage Intelligence (BIC) report Manager, or
- Running any BIC report



Solution / Details

The following steps explain how to resolve the abovementioned query:

1. Navigate to **Common | Maintenance | Company Details**.
2. Ensure the company name is not more than 40 Characters.
3. Click OK to save the changes.
4. Close and re-open the company on all workstations.
5. The above error should now be resolved.

Disclaimer: These articles refer to possible solutions and a platform to share information. Each article describes a method that solved a query (knowledge gathered from previous sites) and how Sage Evolution should operate. These articles make reference to a specific Sage Evolution version, however the thought process can be generalised. Please note the information contained in these articles should be treated as guidelines and adapted to accommodate differences in business processes and IT environments. Articles may not be applicable to all environments. If this article did not resolve your query please contact the Sage Evolution Support Department directly on: +27 11 304 3530.